



9 Saxon Gardens, Caister-On-Sea

Great Yarmouth



Minors & Brady

9 Saxon Gardens

Caister-On-Sea, Great Yarmouth

A quiet cul-de-sac setting in coastal Caister-on-Sea gives this link-detached bungalow an immediate sense of relaxed, day-to-day ease, offering a comfortable single-level layout that suits modern, low-maintenance living. Inside, a bright entrance hall leads through to a spacious living room and conservatory, both enjoying views of the generous private garden. The kitchen provides a practical, well-organised space, while two bedrooms and a brand-new bathroom suite ensure comfort throughout. With a new boiler, a low-maintenance shingle frontage, driveway parking and a garage, this is a welcoming coastal home that brings together convenience, privacy and an appealing sense of space.

Agents Notes

Freehold

Connected to mains water, electricity, gas and drainage.

Gas central heating.





M&B

9 Saxon Gardens

Caister-On-Sea, Great Yarmouth

- Down a quiet cul-de-sac in the coastal village of Caister-On-Sea, lies this link-detached bungalow set on a generous-size plot
- Moments away from the high street, offering essential shops, eateries, a community centre and Caister healthcare centre
- A short distance to the scenic coastline
- Brand-new boiler installed
- Spacious living room that is filled with natural light, with internal double doors that open into the conservatory, framing views of the garden
- Kitchen fitted with modern units, a freestanding oven, areas for your appliances and a storage cupboard
- Two bedrooms offering comfort and privacy, with a brand-new modern bathroom suite
- A large, private garden featuring several seating areas, a maintained lawn, established beds and a traditional brick and flint wall
- A driveway providing off-road parking, leading up to a garage for storage use



M&B

9 Saxon Gardens

Caister-On-Sea, Great Yarmouth

Set along a quiet cul-de-sac in the coastal village of Caister-on-Sea, this link-detached bungalow presents a well-kept and comfortable single-level home, ideal for those considering downsizing or seeking step-free living. Positioned on a generous plot, it offers a welcoming feel from the moment you enter.

The entrance hall leads into a bright, airy layout, with a spacious living room that enjoys excellent natural light. Internal double doors open through to the conservatory, creating an easy connection to the garden and framing views across the outdoor space.

The kitchen is fitted with modern units, a freestanding oven, appliance spaces and a useful storage cupboard, providing a practical and well-organised setting for day-to-day use.

Two bedrooms offer comfort and privacy, served by a brand-new contemporary bathroom suite. A recently installed boiler adds to the home's efficiency and readiness for immediate occupation.

The rear garden is a particular highlight: a large, private space with several seating areas, a maintained lawn, established beds and the characterful backdrop of a traditional brick and flint wall.

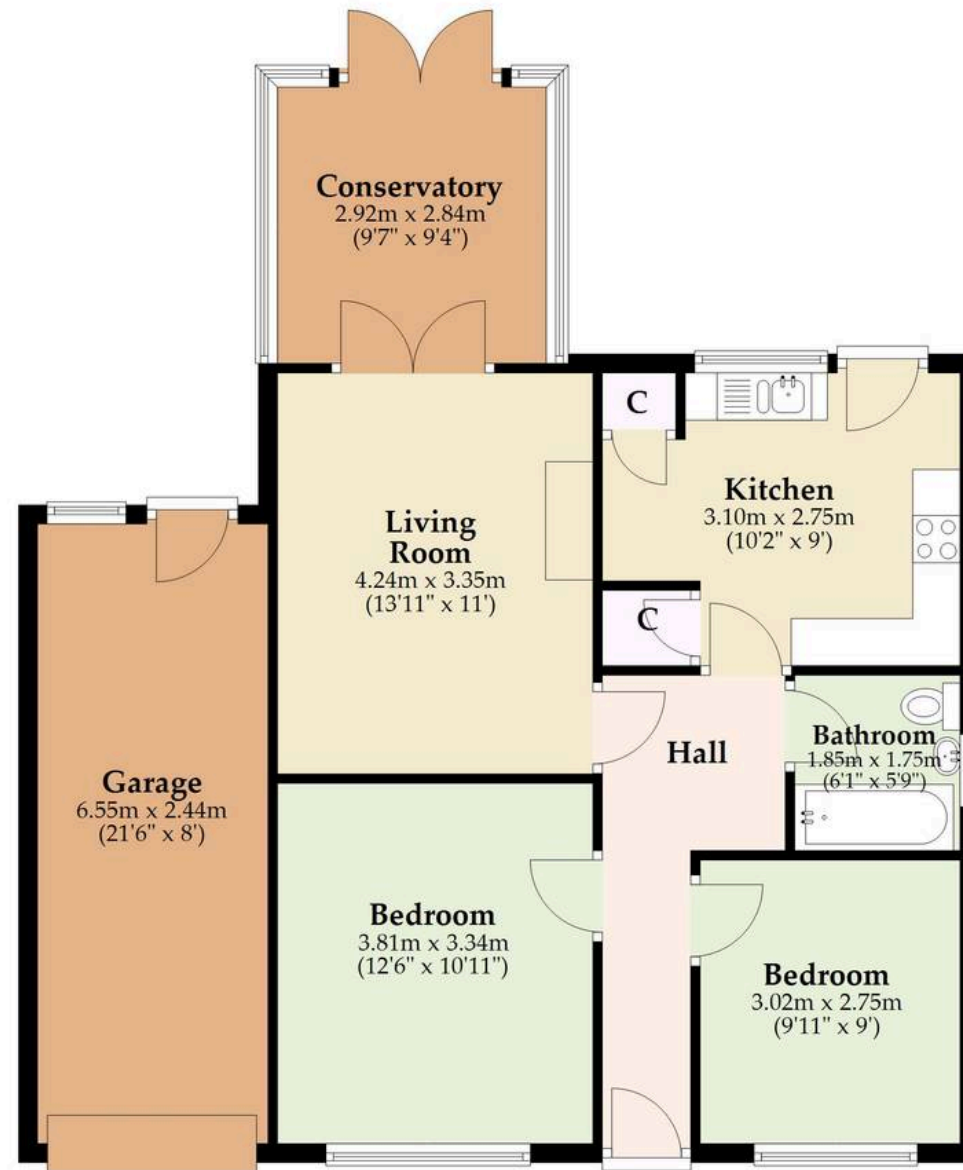
To the front, the shingle garden keeps maintenance to a minimum, while the driveway provides off-road parking and leads to the garage, ideal for storage or hobby use.

Altogether, this is a well-presented coastal bungalow that brings together comfort, practicality and an appealing setting, offering a relaxed and convenient base within this sought-after village.



Ground Floor

Approx. 84.2 sq. metres (906.4 sq. feet)



Total area: approx. 84.2 sq. metres (906.4 sq. feet)

Whilst every attempt has been made to ensure the accuracy of the floorplan contained here, measurements of doors, windows, rooms and any other items are approximate and no responsibility is taken for any error, omission or mis-statement. This plan is for illustrative purposes only and should be used as such by any prospective purchaser. The services, systems and appliances shown have not been tested and no guarantee as to their operability or efficiency can be given.

Plan produced using PlanUp.

Dreaming of this home? Let's make it a *reality*.



Meet *Sarah*
Senior Property Consultant



Meet *Dan*
Branch Partner



Meet *Lauren*
Property Consultant

Minors & Brady
Your home, our market

 caister@minorsandbrady.co.uk

 01493 806188

 48 High Street, Caister-on-Sea, Great Yarmouth, NR30 5EH

CAISTER-ON-SEA | DEREHAM | DISS | NORWICH | OULTON BROAD | WROXHAM



How can we support

- ✓ Residential Mortgages
- ✓ Protection & Insurance
- ✓ Buy-to-let (personal and limited company)



Matt Waters
Director and
Principal



Victoria Payne
Mortgage and
Protection Advisor

Offering you quick and professional mortgage advice every step of the way.

T: 01603 210378
E: enquiries@norfolk-mortgages.co.uk