



6 Taverham Road, Felthorpe

Norwich



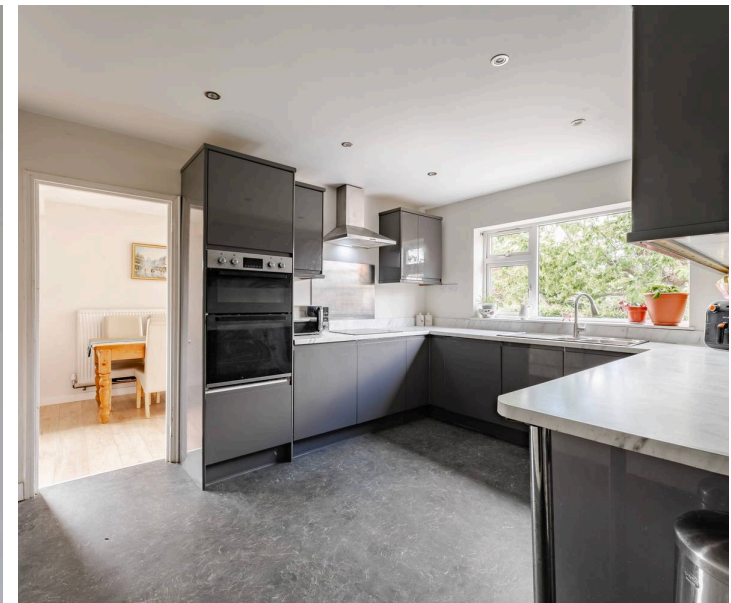
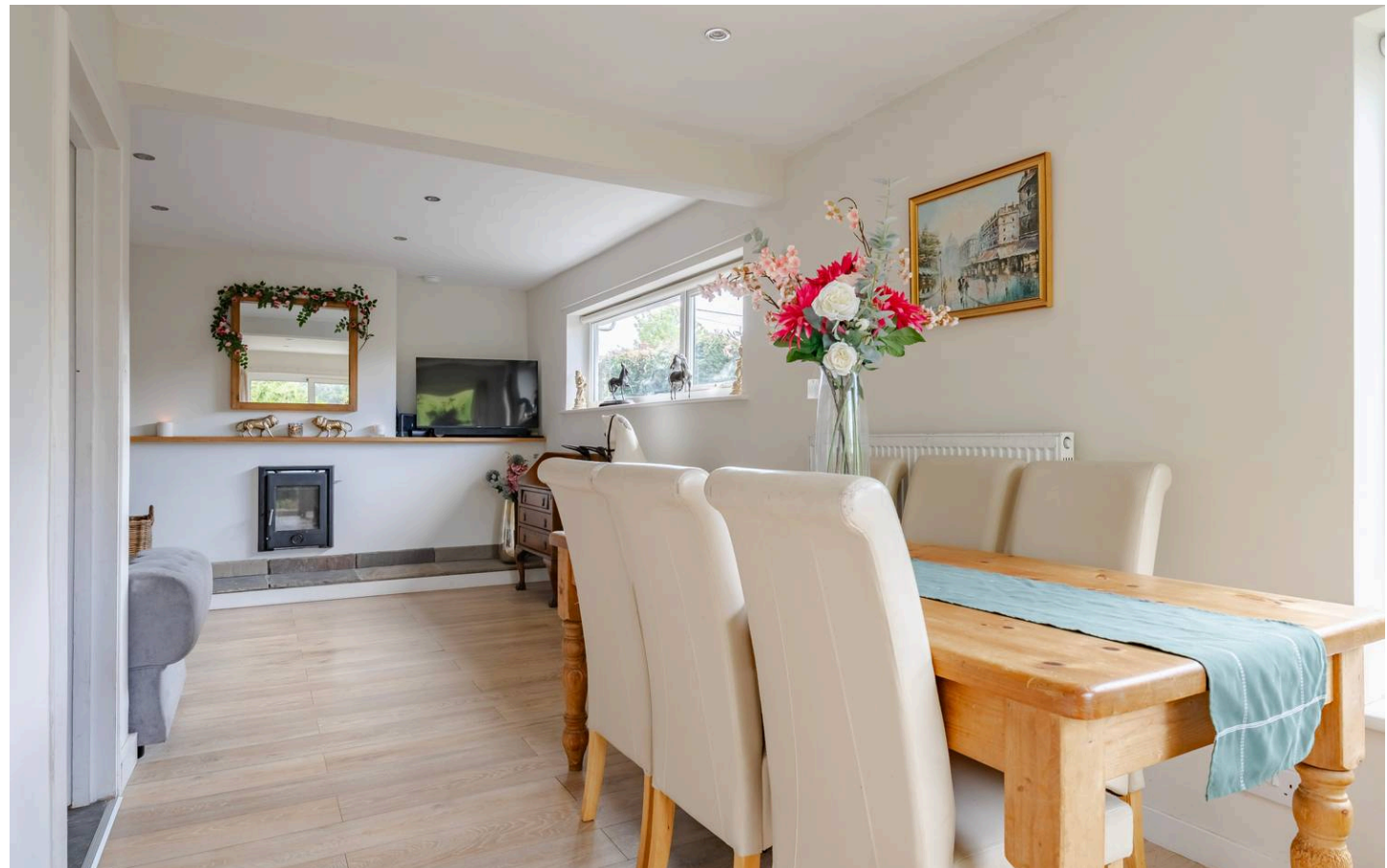
Minors & Brady

# 6 Taverham Road

Felthorpe, Norwich

A spacious, move-in-ready bungalow offering flexible living, countryside views and excellent connectivity. This beautifully refurbished detached home provides generous single-storey accommodation, ideal for families, professionals or those seeking comfortable step-free living. The heart of the property is a bright open-plan lounge and dining space, centred around an inset multi-fuel burner and opening onto the rear garden. A modern kitchen with fully integrated appliances is complemented by a useful utility area, keeping everyday life practical and well organised. The accommodation includes three well-proportioned bedrooms, all with built-in wardrobes, plus an additional room ideal for a home office, studio or optional fourth bedroom. Outside, a private garden backs onto meadowland with woodland beyond, creating a peaceful setting while remaining well placed for the city, coast, Broads and airport.

- Detached bungalow remodelled and refurbished in recent years
- Spacious and flexible layout with three bedrooms plus home office / studio option
- All main bedrooms benefit from built-in wardrobes
- Generous open-plan lounge and dining area with inset multi-fuel burner
- Modern kitchen with fully integrated appliances
- Practical utility room to support everyday living
- Double glazing throughout and oil-fired heating
- Ample parking to the front with easy access around the property
- Private rear garden with lawn, patio, outside taps and multiple garden sheds
- Attractive outlook across meadowland with woodland beyond, well placed for city, coast and countryside access





M&B

## The Location

Taverham Road is set on the edge of the well-kept Norfolk village of Felthorpe, approximately seven miles north-west of Norwich. The surrounding area is quiet and green, characterised by woodland fringes and open farmland, with a mix of traditional village homes and more modern properties. Felthorpe itself retains a strong community feel, with a village hall, children's play area and a historic church, while its edge-of-village position allows for easy access to neighbouring areas.

One of the key advantages of the location is its close connection to Taverham, where a wider range of everyday amenities can be found. These include supermarkets, independent shops, cafés, a garden centre, veterinary practices and additional services, all just a short drive away. Horsford and Taverham together provide excellent practical support for day-to-day life while allowing Felthorpe to retain its quieter, more rural character.

For families, schooling options are well placed, with primary and secondary schools available in the surrounding villages and a choice of further education and independent schooling accessible in Norwich. Outdoor space is a strong feature of the area, with nearby woodland, countryside walks and cycling routes encouraging an active lifestyle close to home.

Transport links are particularly convenient. The Broadland Northway (NDR) is easily reached, offering quick connections around Norwich and onward access to the A47, making travel towards the city, surrounding villages and the wider county straightforward. Road links also provide easy access to the North Norfolk coast, making seaside destinations an achievable part of everyday life or weekend leisure.

Norwich itself is within easy reach by car, offering an extensive range of shopping, restaurants, cultural venues and employment centres, along with a mainline railway station providing direct services to London and beyond.



M&B

# 6 Taverham Road

Felthorpe, Norwich

## Taverham Road, Felthorpe

This well-presented detached bungalow has been carefully remodelled and refurbished in recent years to create a versatile, comfortable home that is ready to move straight into. The layout has been designed with flexibility in mind, making it well suited to families, professional couples requiring home-working space, or those looking for convenient single-storey living.

The heart of the home is the spacious open-plan lounge and dining area, which offers a welcoming and sociable space for everyday living. The lounge is centred around an inset multi-fuel burner, adding warmth and character, while the dining area opens directly onto the rear garden through patio doors, drawing in natural light and providing an easy connection to the outdoors.

The modern kitchen is well planned and generously sized, fitted with a full range of integrated appliances, contemporary units and ample work surfaces. It offers a practical and stylish environment for cooking and entertaining, complemented by an adjoining utility area, which provides additional storage and dedicated space for laundry, helping to keep the living areas clutter-free.

Accommodation is both flexible and well balanced. The property offers three main bedrooms, all benefitting from built-in wardrobes, with the principal bedroom enjoying a private en-suite shower room. An additional room provides the option of a home office, studio or potential fourth bedroom, depending on individual requirements. A well-appointed family bathroom serves the remaining bedrooms and guests.



## 6 Taverham Road

Felthorpe, Norwich

The bungalow benefits from double glazing throughout and oil-fired heating, ensuring year-round comfort. The recent refurbishment means the home is presented in a clean, modern condition, allowing a buyer to settle in immediately.

Outside, the property is set back from the road with plenty of parking to the front. The rear garden is generous and enjoys a high degree of privacy, beginning with a paved seating area, complete with outside taps, and extending onto a lawn bordered by planting. A selection of garden sheds, along with a workshop and log store, provide excellent storage and space for hobbies. Beyond the garden, the property overlooks open meadowland with woodland beyond, creating a particularly attractive and peaceful outlook.

Well located for access to the city, coast, Norfolk Broads and the airport, this adaptable bungalow combines modern comfort with countryside surroundings, offering a flexible and inviting home with strong lifestyle appeal.

### Agents Note

This property will be sold freehold and connected to oil-fired heating, mains water, electricity and drainage.



M&B

## Ground Floor

Approx. 96.9 sq. metres (1042.5 sq. feet)



Total area: approx. 96.9 sq. metres (1042.5 sq. feet)

Whilst every attempt has been made to ensure the accuracy of the floorplan contained here, measurements of doors, windows, rooms and any other items are approximate and no responsibility is taken for any error, omission or mis-statement. This plan is for illustrative purposes only and should be used as such by any prospective purchaser. The services, systems and appliances shown have not been tested and no guarantee as to their operability or efficiency can be given.

Plan produced using PlanUp.

# Dreaming of this home? Let's make it a *reality*.



Meet *Abi*  
Branch Partner



Meet *Karol*  
Property Lister



Meet *Claire*  
Aftersales Team Leader

Minors & Brady  
*Your home, our market*



wroxham@minorsandbrady.co.uk



01603 783088



6 Church Road, Wroxham, Norwich, NR12 8UG

CAISTER-ON-SEA | DEREHAM | DISS | NORWICH | OULTON BROAD | WROXHAM



## How can we support

- ✓ Residential Mortgages
- ✓ Protection & Insurance
- ✓ Buy-to-let (personal and limited company)



**Matt Waters**  
Director and  
Principal



**Victoria Payne**  
Mortgage and  
Protection Advisor

Offering you quick and professional mortgage advice every step of the way.

T: 01603 210378  
E: [enquiries@norfolk-mortgages.co.uk](mailto:enquiries@norfolk-mortgages.co.uk)