



4 Peacock Drive, Bradwell
Great Yarmouth



Minors & Brady

4 Peacock Drive

Bradwell, Great Yarmouth

Designed for modern living, this semi-detached home built in 2020 offers a bright, contemporary setting in a peaceful Bradwell cul-de-sac, creating an easy backdrop for everyday routines and relaxed weekends. The open-plan layout, quality finishes and natural flow through to the garden make it well suited to everything from family mealtimes to hosting friends, while the comfortable living spaces feel instantly welcoming. Upstairs, three well-proportioned bedrooms, including a private principal suite, provide the calm and separation needed at the end of the day, giving the home a balanced sense of space throughout. Altogether, it's a thoughtfully finished property that brings together comfort, practicality and a setting that supports a genuinely enjoyable pace of life.



M&B

4 Peacock Drive

Bradwell, Great Yarmouth

- Built in 2020 by a local builder, this semi-detached residence sits down a quiet cul-de-sac in the sought-after village of Bradwell
- Pristine condition, showcasing a bright, contemporary interior that can easily adapt to your own preferences and style
- Open-plan kitchen/dining room equipped with modern cabinetry, an integrated double oven, a gas hob, a dishwasher and space for a tall fridge/freezer
- Comfortable living room with French doors that open out to the garden, inviting relaxation and entertaining
- Three bedrooms offering comfort and privacy, one of which is a principal bedroom flaunting a built-in wardrobe and a private en-suite shower room
- Family bathroom comprising of a quality three-piece suite, with tiled walls
- A private, landscaped garden that backs onto tall trees, features several seating areas, a laid to lawn and two timber storage sheds
- A maintained front garden and a brick-weave driveway providing off-road parking
- Easy access to a wide range of amenities, including shops, schools for all ages, transport links and the coastline just a short drive away



M&B

4 Peacock Drive

Bradwell, Great Yarmouth

Bradwell

Peacock Drive sits within a settled residential area of Bradwell, giving you a practical village setting with quick links to nearby Gorleston and Great Yarmouth. The coast is within easy reach, with Gorleston's long sandy beach a short drive away. Day-to-day needs are well covered, with supermarkets including Morrisons, Tesco Express, Aldi, and Lidl close by. Families have several established schools in the area, such as Homefield Primary, Hillside Primary, and Lynn Grove Academy.

Green spaces like Mill Lane Playing Field and Gorleston's parks offer room for walks and outdoor time, while nearby villages including Belton, Burgh Castle, and Hopton widen your options for countryside and coastal scenery. Transport links are reliable, with regular bus routes running toward Gorleston, Great Yarmouth, and connections to the A47 for wider travel. Altogether, it's a location that supports a straightforward, well-connected lifestyle with coast, parks, and amenities all close at hand.



M&B

4 Peacock Drive

Bradwell, Great Yarmouth

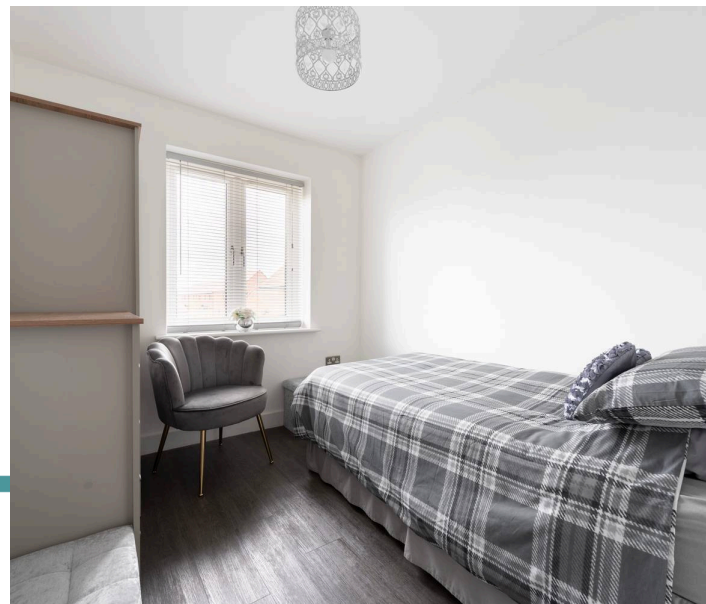
Built in 2020 by a respected local builder, this semi-detached home sits within a quiet cul-de-sac in the sought-after village of Bradwell. Presented in pristine condition, it offers a bright, contemporary interior that lends itself well to a range of lifestyles, with spaces that feel welcoming from the moment you enter.

The entrance hall is bright and airy, complete with a useful storage cupboard and a convenient WC, while high-quality flooring continues throughout the ground floor. The open-plan kitchen/dining room features modern cabinetry, an integrated double oven, a gas hob, a dishwasher and space for a tall fridge/freezer, creating a practical and sociable setting for everyday living.

The comfortable living room has French doors that open directly onto the garden, making it an inviting place to unwind or entertain.

Upstairs, three bedrooms provide comfort and privacy. The principal bedroom includes a built-in wardrobe and a private en-suite shower room, while the remaining bedrooms are well suited to family, guests or a dedicated home office.

A family bathroom with a quality three-piece suite and tiled walls completes the accommodation.



M&B

4 Peacock Drive

Bradwell, Great Yarmouth

The rear garden is a particular highlight: landscaped, private and backing onto tall trees, it offers several seating areas, a laid-to-lawn and two timber storage sheds.

To the front, a maintained garden and a brick-weave driveway provide off-road parking.

A well-kept modern home in a peaceful setting, it presents an appealing opportunity for those seeking a move-in-ready property in this popular village.

Agents Notes

Freehold.

Connected to mains water, electricity, gas and drainage.

Service/maintenance fee: £360 p/a.

Gas central heating.



Dreaming of this home? Let's make it a *reality*.



Meet *Sarah*
Senior Property Consultant



Meet *Dan*
Branch Partner



Meet *Lauren*
Property Consultant

Minors & Brady
Your home, our market

 caister@minorsandbrady.co.uk

 01493 806188

 48 High Street, Caister-on-Sea, Great Yarmouth, NR30 5EH

CAISTER-ON-SEA | DEREHAM | DISS | NORWICH | OULTON BROAD | WROXHAM



How can we support

- ✓ Residential Mortgages
- ✓ Protection & Insurance
- ✓ Buy-to-let (personal and limited company)



Matt Waters
Director and
Principal



Victoria Payne
Mortgage and
Protection Advisor

Offering you quick and professional mortgage advice every step of the way.

T: 01603 210378
E: enquiries@norfolk-mortgages.co.uk