



11 Chestnut Avenue, North Walsham

North Walsham



Minors & Brady

This beautifully renovated three-bedroom detached house offers a stylish, turn-key moving experience in a popular market town location. Every corner of the home has been thoughtfully enhanced by the current owners, balancing modern aesthetics with a practical layout across two floors. The ground floor features a sleek, updated kitchen and a spacious lounge with a cozy wood-burner that flows naturally into the adjoining dining room. Upstairs, you will find three well-proportioned bedrooms alongside a newly refurbished family bathroom. Outside, the property boasts a private, fully enclosed rear garden perfect for outdoor relaxation, as well as a brick single garage and a generous driveway with off-road parking for two vehicles. Situated close to local schools and shops, it represents the ideal opportunity for families or professionals seeking comfort and town convenience.

- Beautifully renovated comprehensively updated by the current owners to offer a modern walk-in ready home
- Detached three-bedroom house a well-proportioned layout spread comfortably across two floors
- Cosy lounge with wood-burner a spacious primary reception room featuring a characterful wood-burning stove
- Adjoining dining room seamlessly connected to the lounge featuring French doors that open directly to the garden
- Modern fitted kitchen stylishly updated with practical workspace and a contemporary design
- Newly refurbished bathroom and cloakroom features a modern first-floor family bathroom and a convenient ground-floor wc
- Enclosed rear garden a fully enclosed private outdoor space ideal for families pets and relaxation
- Garage and off-road parking includes a brick-built single garage and a generous driveway with space for two vehicles
- Practical modern comforts outfitted with gas-fired central heating upvc double glazing and updated panelled interior doors





M&B

11 Chestnut Avenue

North Walsham

The Location

North Walsham offers a setting that feels both refined and convenient on the edge of town. Lined with a mix of attractive residential homes and mature greenery, the area provides a sense of arrival while remaining comfortably close to everyday amenities. The position allows residents to enjoy a quieter pace without feeling detached, making it particularly appealing to families and professionals seeking a well-balanced lifestyle.

North Walsham itself is a thriving market town with a strong local identity. The weekly market, independent shops, cafés, and traditional pubs create a lively yet welcoming atmosphere, while practical amenities such as supermarkets, schools, medical facilities, and leisure options, including the Victory Swim and Fitness Centre, are all easily accessible. The town's railway station offers regular services to Norwich and the North Norfolk coast, supporting both commuting and leisure travel, while the A149 and B1145 provide efficient road links throughout the region.

Beyond the town, the surrounding area adds to North Walsham's enduring appeal. Open countryside is close at hand for walking and cycling, and the well-regarded beaches of Mundesley and Happisburgh are just a short drive away, offering year-round coastal enjoyment. This combination of established residential character, strong community spirit, and access to both coast and countryside gives the area a quietly desirable and almost exclusive feel, setting it apart as a sought-after location within North Norfolk.



11 Chestnut Avenue

North Walsham

Chestnut Avenue, North Walsham

This well-presented detached property has been comprehensively updated by the current owners, offering a modern and inviting home that is ready to move straight into. Thoughtfully enhanced across both floors, the property balances contemporary style with practical layout choices. Its refreshed living spaces and upgraded fixtures make it an excellent choice for families and professionals seeking a comfortable home close to local amenities.

The ground floor is designed to support both relaxed family life and entertaining. A welcoming entrance hall opens into a newly refurbished cloakroom with a ground floor WC, as well as a stylish, modern fitted kitchen that offers plenty of practical workspace. The main living area features a spacious lounge, complete with a cozy wood-burner for the cooler months.

This room flows naturally into an adjoining dining room, where French doors open directly onto the rear garden, creating a seamless connection between the indoor and outdoor spaces during the summer.

Upstairs, the first floor layout feels balanced and functional, featuring three good-sized bedrooms that offer versatile space for family members or a home office. These rooms are served by a newly renovated family bathroom, updated with modern fixtures and a clean finish.



M&B

11 Chestnut Avenue

North Walsham

The property benefits from practical comforts throughout, including gas-fired central heating, uPVC double glazing, and updated panelled interior doors.

Outside, the fully enclosed rear garden provides a safe, private space for children, pets, or outdoor relaxation. To the front and side, a generous driveway provides convenient off-road parking for two vehicles and leads to a brick-built single garage.

Situated in a highly desirable market town location, the home is ideally placed within easy reach of popular schools, local shops, and everyday essential services.

Agents Note

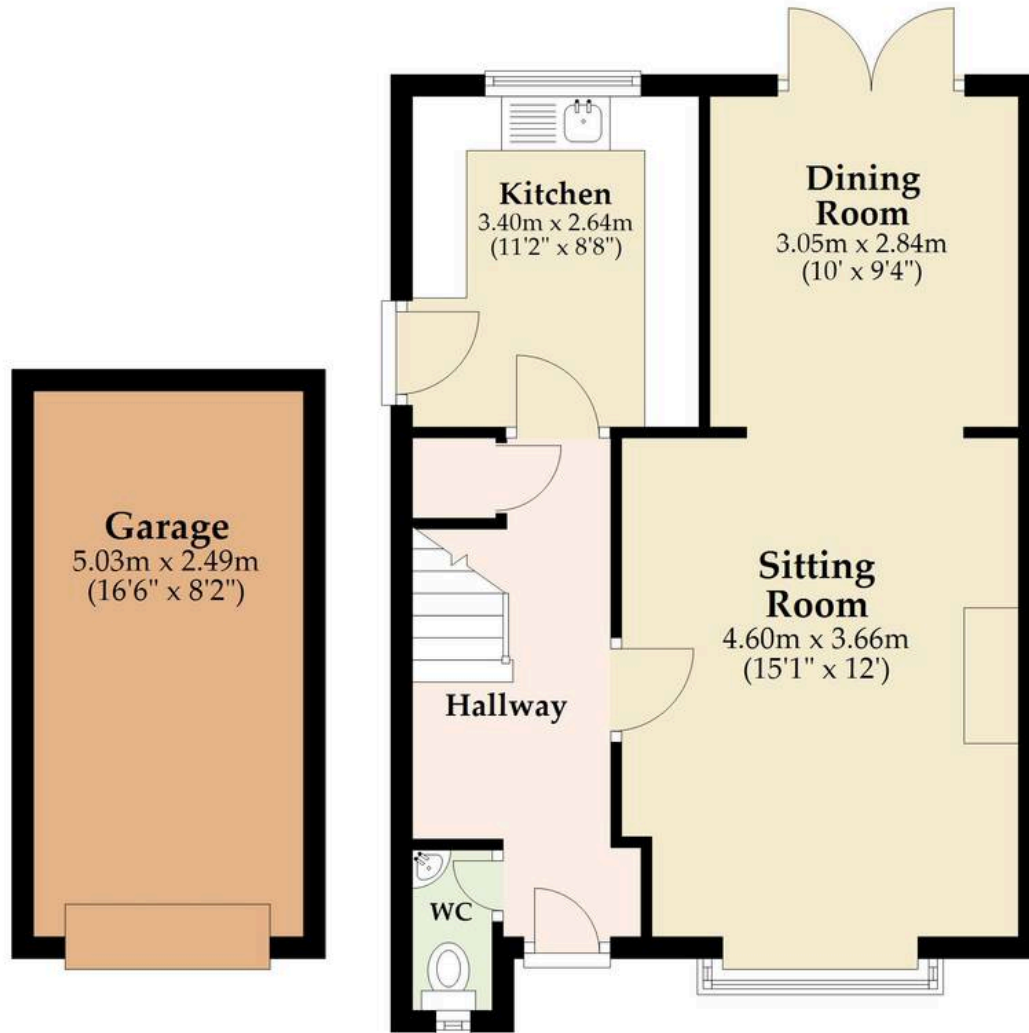
This property will be sold freehold and connected to mains water, electricity, gas and drainage.



M&B

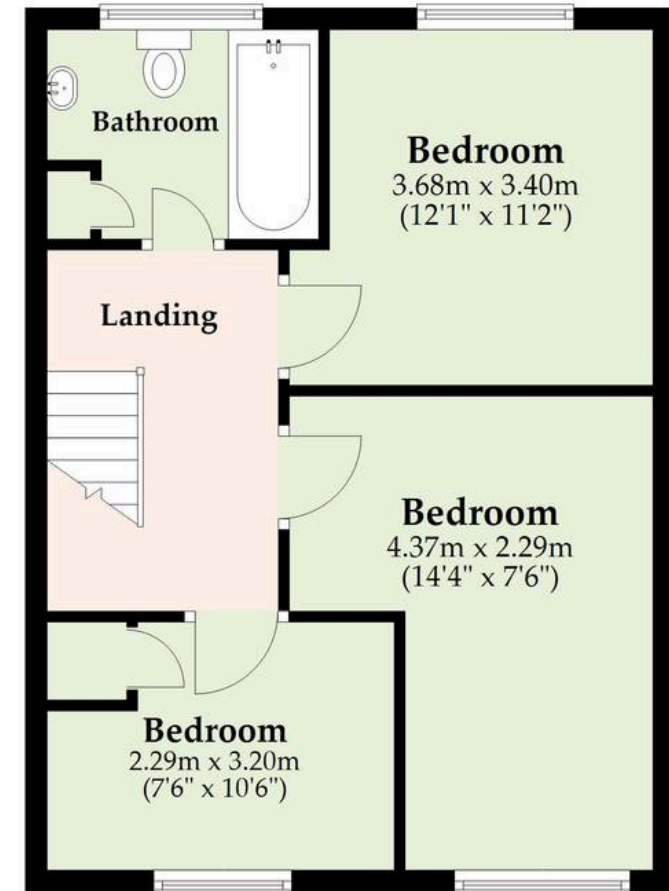
Ground Floor

Approx. 63.9 sq. metres (687.8 sq. feet)



First Floor

Approx. 45.1 sq. metres (485.7 sq. feet)



Total area: approx. 109.0 sq. metres (1173.6 sq. feet)

Whilst every attempt has been made to ensure the accuracy of the floorplan contained here, measurements of doors, windows, rooms and any other items are approximate and no responsibility is taken for any error, omission or mis-statement. This plan is for illustrative purposes only and should be used as such by any prospective purchaser. The services, systems and appliances shown have not been tested and no guarantee as to their operability or efficiency can be given.

Plan produced using PlanUp.

Dreaming of this home? Let's make it a *reality*.



Meet *Abi*
Branch Partner



Meet *Karol*
Property Lister



Meet *Claire*
Aftersales Team Leader

Minors & Brady
Your home, our market



wroxham@minorsandbrady.co.uk



01603 783088



6 Church Road, Wroxham, Norwich, NR12 8UG

CAISTER-ON-SEA | DEREHAM | DISS | NORWICH | OULTON BROAD | WROXHAM



How can we support

- ✓ Residential Mortgages
- ✓ Protection & Insurance
- ✓ Buy-to-let (personal and limited company)



Matt Waters
Director and
Principal



Victoria Payne
Mortgage and
Protection Advisor

Offering you quick and professional mortgage advice every step of the way.

T: 01603 210378
E: enquiries@norfolk-mortgages.co.uk