



Middle Black Door Cottage The Street, Runham

Great Yarmouth



Minors & Brady

Middle Black Door Cottage The Street

Runham, Great Yarmouth

A charming village home offering comfort, character and countryside calm. This beautifully presented one-bedroom mid-terraced property is set within the peaceful Norfolk village of Runham, ideal for couples or those seeking a quieter way of life. The interior is welcoming and well laid out, with a cosy reception room flowing through to a bright kitchen and dining area. Upstairs, the generous double bedroom is complemented by useful loft space and a neatly finished shower room. Outside, the enclosed courtyard garden provides a private and low-maintenance spot for relaxing or entertaining. With pleasant views, village surroundings and close proximity to the Norfolk Broads, this home offers an appealing blend of tranquillity and everyday practicality.

- One-bedroom mid-terraced home
- Beautifully presented throughout
- Quiet and sought-after village location
- Ideal for couples or individuals
- Comfortable reception room with natural light
- Bright kitchen with space for dining
- Generous double bedroom with loft access for storage
- Modern and well-finished shower room
- Enclosed, low-maintenance courtyard garden
- Freehold property close to the Norfolk Broads and countryside walks





M&B

Middle Black Door Cottage The Street

Runham, Great Yarmouth

The Location

The village of Runham is situated approximately five miles north-west of the coastal town of Great Yarmouth and lies close to the neighbouring villages of Thrigby, Filby and Stokesby. Set within a quiet semi-rural environment, the village enjoys a peaceful atmosphere while remaining within comfortable reach of everyday amenities and larger town centres.

Runham is particularly well placed for access to the Norfolk Broads, with its network of rivers, waterways and nature reserves offering excellent opportunities for boating, walking, cycling and wildlife watching. The Norfolk coastline is also only a short drive away, providing easy access to sandy beaches, coastal walks and seaside towns for days out.

For day-to-day needs, a nearby post office can be found in Filby, while the riverside village of Stokesby offers a well-regarded café and public house, popular with both locals and visitors alike. These nearby villages add to the strong sense of community within the area while retaining the charm of traditional rural living.

Surrounded by open countryside, Runham is an ideal location for those seeking a quieter lifestyle with a close connection to nature. The area is rich in birdlife and wildlife, with open fields, hedgerows and waterways creating a natural backdrop that can be enjoyed year-round.



Middle Black Door Cottage The Street

Runham, Great Yarmouth

Overall, Runham offers a desirable balance of countryside tranquillity and accessibility, appealing to those who value rural surroundings while remaining within easy reach of the coast, the Broads and the amenities of Great Yarmouth.

The Street, Runham

Set within the peaceful village of Runham, this beautifully presented one-bedroom mid-terraced home offers a calm and characterful retreat, well suited to couples or individuals seeking a quieter pace of life close to the Norfolk Broads. The property enjoys attractive outlooks and a village setting that feels both established and welcoming, while still remaining within easy reach of surrounding countryside and nearby communities.

The ground floor is centred around a comfortable reception room, which immediately feels inviting thanks to its natural light and practical layout.

There is ample space for seating and everyday furniture, along with useful built-in storage that keeps the room feeling uncluttered. From here, the home flows naturally into the kitchen area, creating a layout that works well for both day-to-day living and relaxed evenings in.

The kitchen and dining space is bright and functional, fitted with modern units and work surfaces and offering space for cooking, dining and casual entertaining. A door leads directly out to the rear garden, strengthening the connection between indoor and outdoor living, while additional storage and stair access make practical use of the available space.



M&B

Middle Black Door Cottage The Street

Runham, Great Yarmouth

Upstairs, the double bedroom is generously sized and enjoys a peaceful feel, with room for freestanding furniture alongside useful built-in storage. A feature fireplace adds character, and access to the loft provides valuable additional storage, helping to keep the main living areas tidy and efficient.

The shower room is fresh and well presented, fitted with a modern suite including a vanity basin, WC and shower, along with a privacy window that allows in natural light while maintaining discretion.

Outside, the property benefits from an enclosed courtyard-style garden, designed for ease of maintenance and privacy. The space is ideal for seating, potted plants or quiet outdoor relaxation, with both the front and rear areas enclosed to create a sense of separation from the surrounding village lanes.

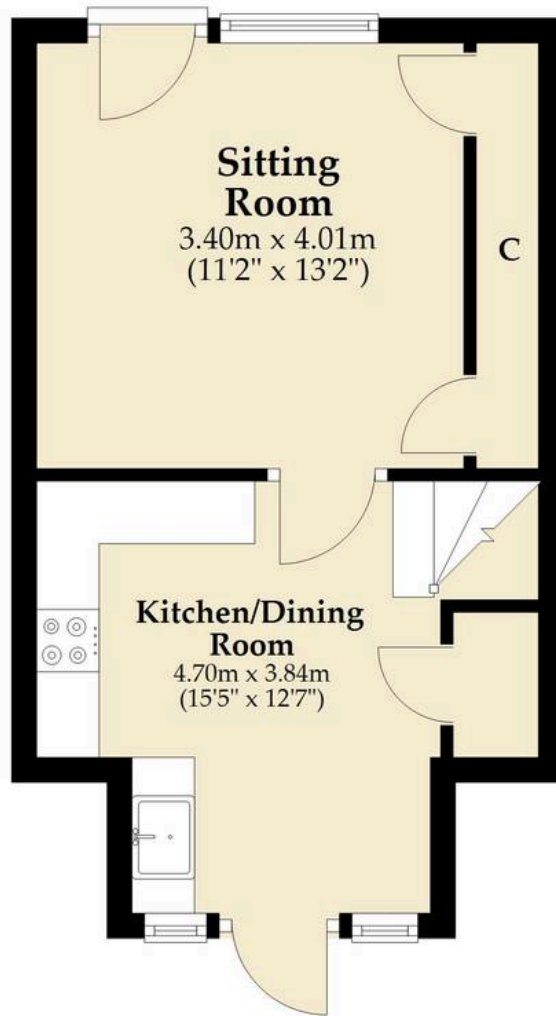
Agents Note

This property will be sold freehold and connected to mains water, electricity and drainage.



Ground Floor

Approx. 30.3 sq. metres (325.9 sq. feet)



First Floor

Approx. 26.3 sq. metres (283.5 sq. feet)



Total area: approx. 56.6 sq. metres (609.4 sq. feet)

Whilst every attempt has been made to ensure the accuracy of the floorplan contained here, measurements of doors, windows, rooms and any other items are approximate and no responsibility is taken for any error, omission or mis-statement. This plan is for illustrative purposes only and should be used as such by any prospective purchaser. The services, systems and appliances shown have not been tested and no guarantee as to their operability or efficiency can be given.

Plan produced using PlanUp.

Dreaming of this home? Let's make it a *reality*.



Meet *Sarah*
Senior Property Consultant



Meet *Dan*
Branch Partner



Meet *Lauren*
Property Consultant

Minors & Brady
Your home, our market

 caister@minorsandbrady.co.uk

 01493 806188

 48 High Street, Caister-on-Sea, Great Yarmouth, NR30 5EH

CAISTER-ON-SEA | DEREHAM | DISS | NORWICH | OULTON BROAD | WROXHAM



How can we support

- ✓ Residential Mortgages
- ✓ Protection & Insurance
- ✓ Buy-to-let (personal and limited company)



Matt Waters
Director and
Principal



Victoria Payne
Mortgage and
Protection Advisor

Offering you quick and professional mortgage advice every step of the way.

T: 01603 210378
E: enquiries@norfolk-mortgages.co.uk