



157 Lloyds Avenue, Kessingland

Lowestoft



Minors & Brady

157 Lloyds Avenue

Kessingland, Lowestoft

A delightful opportunity in the heart of Kessingland, this chain-free semi-detached bungalow combines a peaceful residential setting with everyday convenience, being just a short walk from the local shop. Well-maintained and immediately comfortable, the property also offers clear scope to modernise and tailor the interiors to your own taste. Bright living spaces, including a generous lounge and a light-filled conservatory, are complemented by two double bedrooms and a private rear garden with both lawn and patio areas. With parking available and the coast within easy reach, it presents an appealing prospect for those seeking a relaxed home with plenty of potential.

- Offered chain free
- Semi-detached bungalow positioned down a quiet, residential road in the coastal village of Kessingland
- Potential to modernise and make it your own
- Spacious living room filled with natural light
- Kitchen/dining room fitted with a range of units, a freestanding oven and areas for appliances
- Light-filled conservatory that extends the reception space
- Two double bedrooms offering comfort and privacy
- Shower room comprising of a three-piece suite
- A private, well-maintained garden featuring a patio for seating, a laid to lawn and a timber storage shed
- Easy access to the coastline and village amenities





M&B

157 Lloyds Avenue

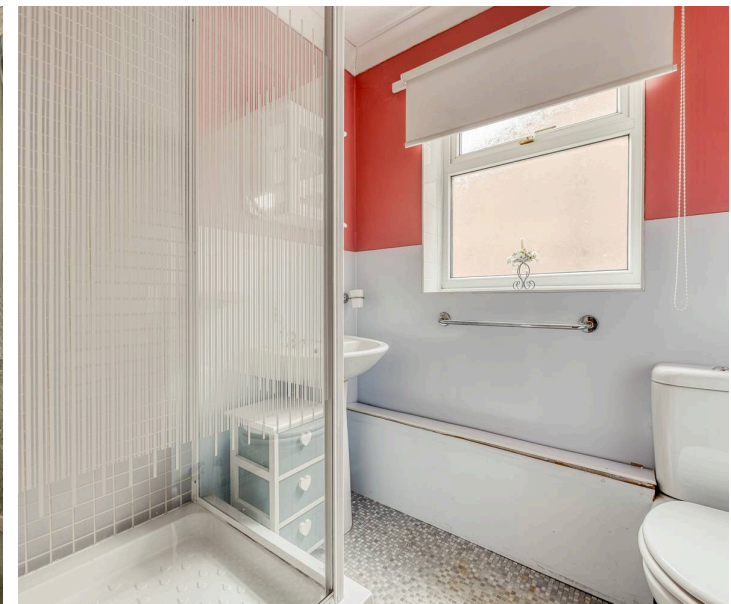
Kessingland, Lowestoft

Kessingland

Lloyds Avenue sits in a quiet pocket of Kessingland, a coastal village just south of Lowestoft, where residential streets meet big skies and open shoreline. The road is only a short walk from the beach, giving you easy access to long stretches of sand and shingle, the dunes, and the wide, uninterrupted views that make this part of the Suffolk coast feel spacious and calm. The setting is residential but never isolated: the village centre is close by, with everyday amenities such as the Co-op, local cafés, takeaways, a pharmacy, a post office, and a well-used community hub.

For larger shops, the nearest supermarkets in Pakefield are Morrisons, Sainsburys and Aldi, both a straightforward drive along the A12. Families tend to look toward Kessingland Church of England Primary Academy within the village, while Pakefield Primary School and Pakefield High School are the next closest options to the north.

Transport links are practical for a coastal village: regular bus services run toward Lowestoft, Beccles, and Norwich, and the A12 gives you a direct route by car along the coast or inland. The lifestyle here leans toward relaxed coastal living, morning walks on the beach, easy access to nature reserves, and a village pace that still keeps you connected to larger towns when you need them.



M&B

157 Lloyds Avenue

Kessingland, Lowestoft

This welcoming home begins with a useful porch that leads into a bright and generously sized living room, an inviting space filled with natural light. The adjoining kitchen/dining room is fitted with a range of units, a freestanding oven and designated areas for appliances, offering a practical layout with potential for modernisation.

A light-filled conservatory extends the reception space further, creating an ideal spot for dining, relaxing or enjoying views of the garden throughout the seasons.

There are two comfortable double bedrooms, each providing a sense of privacy, along with a well-appointed shower room featuring a three-piece suite.

The rear garden is a particular highlight: a private and well-maintained outdoor space with a patio for seating, a lawned area and a timber storage shed. The front garden is neatly kept, and parking is available.

In all, this is a property that offers immediate comfort with the exciting opportunity to update and make it your own, all within a quiet coastal setting.

Agents Notes

Freehold

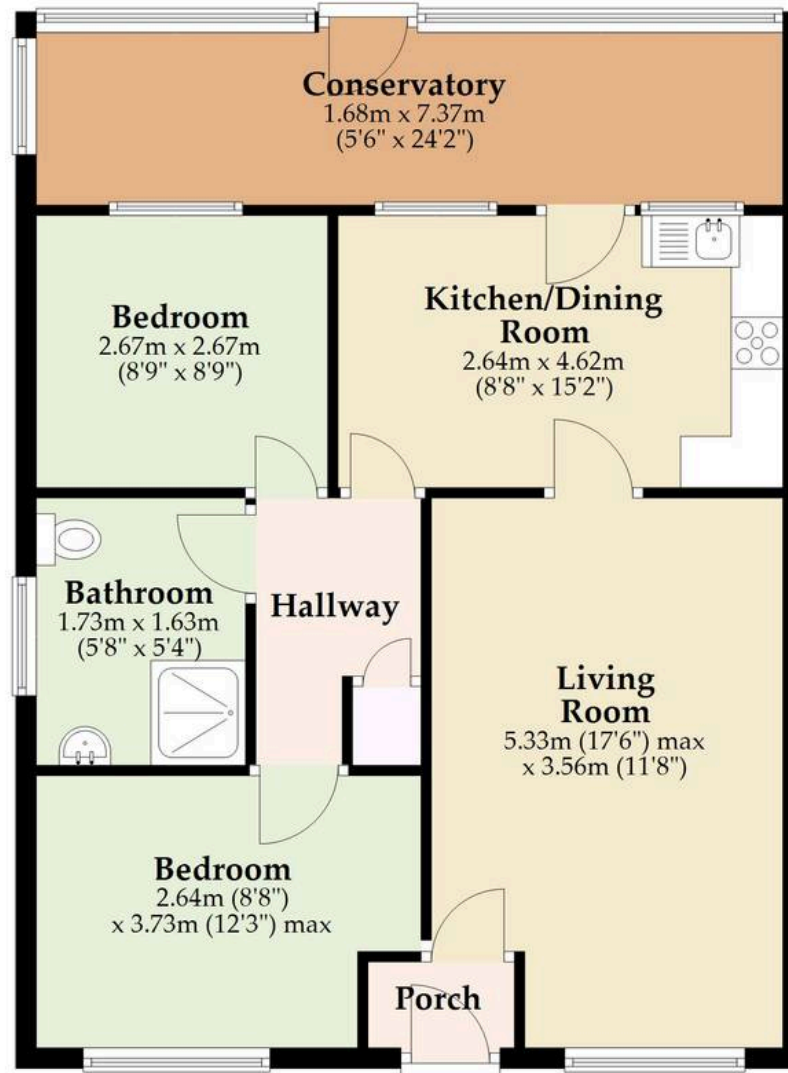
Connected to mains water, electricity and drainage.

Electric heating (gas available but needs to be connected).



Ground Floor

Approx. 70.0 sq. metres (753.6 sq. feet)



Total area: approx. 70.0 sq. metres (753.6 sq. feet)

Sqft excludes hall, landing and garage.

Whilst every attempt has been made to ensure the accuracy of the floorplan contained here, measurements of doors, windows, rooms and any other items are approximate and no responsibility is taken for any error, omission or mis-statement. This plan is for illustrative purposes only and should be used as such by any prospective purchaser. The services, systems and appliances shown have not been tested and no guarantee as to their operability or efficiency can be given.

Plan produced using PlanUp.

Dreaming of this home? Let's make it a *reality*.



Meet *Macey*
Branch Manager



Meet *Bradley*
Senior Property Lister



Meet *Ollee*
Senior Property Consultant

Minors & Brady
Your home, our market

 oultonbroad@minorsandbrady.co.uk

 01502 447788

 Ivy Lane, Oulton Broad, NR33 8QH

CAISTER-ON-SEA | DEREHAM | DISS | LETTINGS | NORWICH | OULTON BROAD | WROXHAM



How can we support

- ✓ Residential Mortgages
- ✓ Protection & Insurance
- ✓ Buy-to-let (personal and limited company)



Matt Waters
Director and
Principal



Victoria Payne
Mortgage and
Protection Advisor

Offering you quick and professional mortgage advice every step of the way.

T: 01603 210378
E: enquiries@norfolk-mortgages.co.uk