



15 Meadow Drive, Mundesley

Norwich



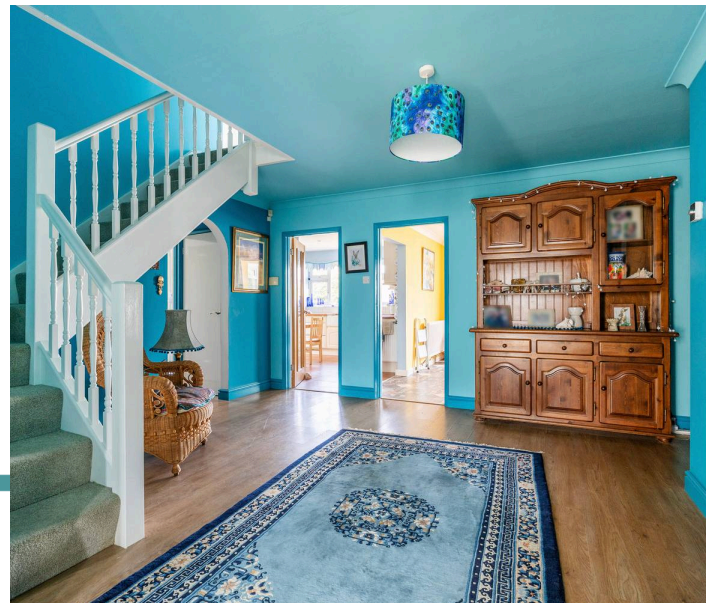
Minors & Brady

15 Meadow Drive

Mundesley, Norwich

A truly exceptional coastal home offering remarkable space, flexibility and a setting just moments from the sea. Beautifully updated throughout, this substantial detached chalet-style residence provides five bedrooms and three bathrooms, perfectly suited to modern family living or hosting guests. The ground floor delivers a versatile mix of reception spaces, including a stunning sitting room with woodburner, a formal dining room and a bright conservatory extension opening onto the gardens. At the heart of the home, a carefully refitted kitchen combines quality finishes with practical design, creating a sociable and highly functional space. Upstairs, generous bedrooms are complemented by elevated views towards the sea, adding to the home's coastal appeal. Outside, expansive gardens and ample parking with a double garage complete a property that is both distinctive and rarely available in such a prime village setting.

- Prime coastal village location just moments from the sea
- Substantial detached chalet-style residence
- Five generous bedrooms and three bathrooms
- Flexible layout ideal for family or multi-generational living
- Beautifully refitted kitchen with quality finishes
- Multiple reception rooms including conservatory extension
- Feature sitting room with woodburner and oak detailing
- Expansive gardens with mature planting and open outlook
- Extensive driveway parking with double-length garage



M&B



M&B

15 Meadow Drive

Mundesley, Norwich

The Location

Located within the sought-after coastal village of Mundesley, the property enjoys a peaceful residential setting within walking distance of the beach.

This established area is popular with both full-time residents and those seeking a second home by the sea, offering a quieter lifestyle compared to larger nearby towns. Mundesley itself has a range of everyday amenities, including a convenience store, independent shops, cafés, fish and chip shops, a medical centre, and a primary school, covering most day-to-day needs without having to travel far.

The village is particularly known for its wide sandy beach, which is backed by colourful beach huts and accessed via sloping paths and steps. The coastline here forms part of the Norfolk Coast Area of Outstanding Natural Beauty, with cliff-top walks providing open sea views and routes towards neighbouring villages. Seasonal changes can affect access to some paths due to coastal erosion, which is a recognised feature of this stretch of coastline.

Transport links are mainly road-based. The nearby market town of North Walsham is around a 10-minute drive and provides larger supermarkets, additional schooling, and a railway station with services to Norwich. Cromer, approximately 20 minutes away by car, offers a wider selection of shops, restaurants, and leisure facilities, as well as a hospital and train connections. Norwich, the nearest city, is roughly 45 minutes by car depending on traffic and provides extensive retail, dining, and cultural options, along with mainline rail services and an international airport.



15 Meadow Drive

Mundesley, Norwich

Meadow Drive, Mundesley

This striking and beautifully updated detached chalet-style home offers an exceptional level of space, flexibility and presentation, all set within one of North Norfolk's most desirable coastal villages.

Positioned just moments from the sea and within easy reach of the village centre, the property combines lifestyle and practicality with a sense of privacy that is rarely found so close to the coast.

Approached via a generous frontage set behind established boundaries, the home immediately impresses with its scale and setting. Internally, the accommodation is centred around a welcoming and characterful entrance hall.

The ground floor offers a versatile arrangement of reception spaces, including a bright sitting room featuring a woodburner set beneath an oak mantle, creating a warm and inviting focal point.

A separate dining room provides a more formal area for entertaining and leads directly through to a conservatory, a later addition, which offers an additional reception space filled with natural light and enjoying a strong connection to the garden.



M&B

15 Meadow Drive

Mundesley, Norwich

The kitchen has been thoughtfully refitted to a high standard, featuring solid wood work surfaces, a Belfast-style sink and a comprehensive range of integrated appliances, alongside a range-style cooker.

The layout is both practical and sociable, supporting everyday living as well as entertaining. Further ground floor accommodation includes a flexible bed-sitting room or additional reception room, a shower room and separate WC, all designed to enhance the adaptability of the home.

Upstairs, the property continues to deliver generous accommodation, with a further arrangement of bedrooms centred around a spacious landing area, currently used as a study space and enjoying elevated views across the gardens and towards the sea. The principal bedroom is well-appointed, with fitted wardrobes and a modern en suite featuring a walk-in shower.

Additional bedrooms offer excellent proportions, built-in storage and flexibility for family, guests or home working, all supported by a well-equipped family bathroom.

Externally, the grounds are a true highlight. The rear garden extends significantly beyond neighbouring properties, creating a sense of openness and privacy, with expansive lawns, mature planting and a range of established features. A



15 Meadow Drive

Mundesley, Norwich

A rear gate opens directly onto a nearby park, offering convenient access through to the seafront.

To the front, a large driveway provides extensive off-road parking for multiple vehicles and leads to a substantial double-length garage, complete with power, plumbing and additional overhead storage.

Having undergone extensive improvements in recent years, this is a property that offers both immediate enjoyment and long-term flexibility. Whether as a permanent residence, coastal retreat or multi-generational home, it presents a rare opportunity to acquire a distinctive and spacious property in an exceptional seaside setting.

Agents Note

This property will be sold freehold and connected to mains water, electricity, gas and drainage.





Total area: approx. 290.1 sq. metres (3122.2 sq. feet)

Whilst every attempt has been made to ensure the accuracy of the floorplan contained here, measurements of doors, windows, rooms and any other items are approximate and no responsibility is taken for any error, omission or mis-statement. This plan is for illustrative purposes only and should be used as such by any prospective purchaser. The services, systems and appliances shown have not been tested and no guarantee as to their operability or efficiency can be given.
Plan produced using PlanUp.

Dreaming of this home? Let's make it a *reality*.



Meet *Abi*
Branch Partner



Meet *Karol*
Property Lister



Meet *Claire*
Aftersales Team Leader

Minors & Brady
Your home, our market



wroxham@minorsandbrady.co.uk



01603 783088



6 Church Road, Wroxham, Norwich, NR12 8UG

CAISTER-ON-SEA | DEREHAM | DISS | NORWICH | OULTON BROAD | WROXHAM



How can we support

- ✓ Residential Mortgages
- ✓ Protection & Insurance
- ✓ Buy-to-let (personal and limited company)



Matt Waters
Director and
Principal



Victoria Payne
Mortgage and
Protection Advisor

Offering you quick and professional mortgage advice every step of the way.

T: 01603 210378
E: enquiries@norfolk-mortgages.co.uk