



14 Yarmouth Road, Caister-On-Sea

Great Yarmouth



Minors & Brady

14 Yarmouth Road

Caister-On-Sea, Great Yarmouth

Just a short walk from the coast, this well-situated semi-detached home sits quietly back from the road in one of Caister-on-Sea's calmer residential spots. Inside, it offers a welcoming living space, a flexible dining room, a modern kitchen with garden access, a ground-floor bathroom and two comfortable bedrooms upstairs. The private rear garden provides a practical outdoor area with room to enjoy and a useful timber shed. A straightforward, well-kept home that's ideal for first-time buyers, young families or anyone wanting to settle close to the coastline.

Agents Notes

Freehold

Connected to mains water, electricity and drainage.

Electric storage heaters.

Parking: The property deeds provide the occupant with the right of access to the property, via the boundary with the carpark of Claremont Nursing Home. As a result there is an agreement with Claremont that the occupant is able to park in their car park. Occupants are advised to independently verify all rights of access and parking with a professional and to confirm any ongoing agreements directly with Claremont Nursing Home.





M&B

14 Yarmouth Road

Caister-On-Sea, Great Yarmouth

Caister-On-Sea

Yarmouth Road is a main thoroughfare running through Caister-on-Sea, a coastal village just north of Great Yarmouth in Norfolk. The road connects residential streets to the village's High Street and the A149, the main coastal route, providing easy access both within the village and to surrounding towns. Properties here benefit from being within a short walk of the sandy beach and promenade, making the coastline a prominent feature of daily life.

Local amenities are convenient and varied. Along and near Yarmouth Road, residents can find small independent shops, a post office, a pharmacy, cafés, and takeaways, while larger supermarkets such as Tesco, Lidl, and Co-op are within a few minutes' walk or short drive. This mix allows for everyday shopping without needing to travel far.

For families, schooling is close by. Caister Infant with Nursery School and Caister Junior School are the nearest primary options, both within walking distance, while Caister Academy serves as the secondary school, a short ride or walk from the area.

Transport links are practical. Bus services along Yarmouth Road connect directly to Great Yarmouth, where rail and broader bus connections are available. By car, the A149 links north to the Norfolk Broads and west towards the A47 for journeys to Norwich and beyond.



14 Yarmouth Road

Caister-On-Sea, Great Yarmouth

A quietly positioned semi-detached home in the heart of Caister-on-Sea, this property offers a relaxed coastal lifestyle with everyday convenience close at hand.

Set back from the road within a peaceful residential pocket, it will appeal to first-time buyers, young families and anyone seeking a well-kept home near the shoreline.

The entrance hall provides a warm welcome, leading into a comfortable living room designed for easy everyday living. Its calm atmosphere makes it a natural gathering space, while the adjacent dining room offers flexibility for family meals, entertaining or even a work-from-home area.

The kitchen is fitted with modern units and an integrated oven, with space for your own appliances and direct access to the rear garden, ideal for those who enjoy cooking with the doors open on warmer days.

A ground-floor bathroom with a three-piece suite completes the layout on this level.

Upstairs, two first-floor bedrooms provide comfortable and private spaces, well-suited to restful nights or adaptable to individual needs.

Outside, the private rear garden offers a laid-to-lawn area perfect for outdoor seating, play or planting, along with a timber storage shed for practical convenience.

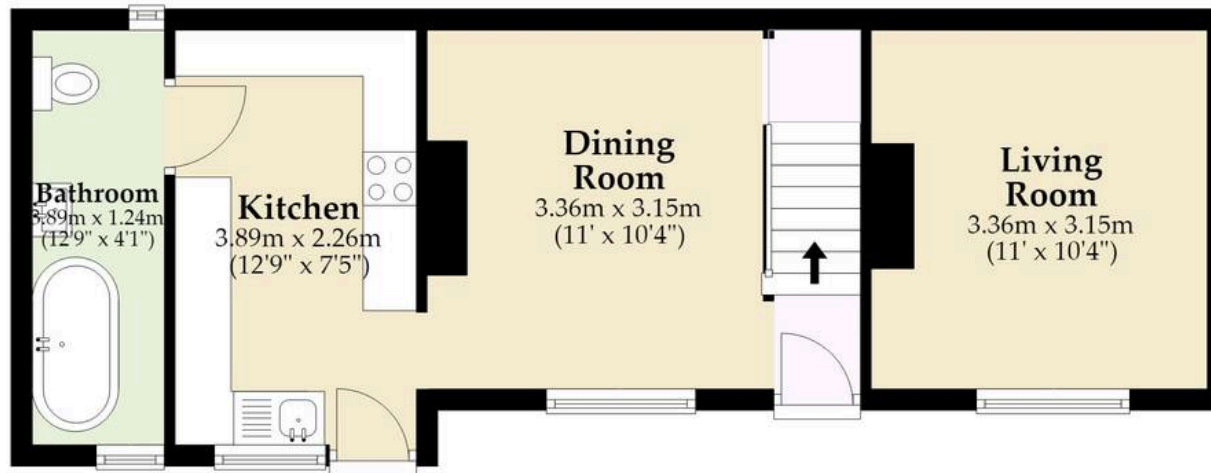
Altogether, this is a home that balances coastal living with everyday comfort, a welcoming property ready to be enjoyed and personalised by its next owners.

M&B



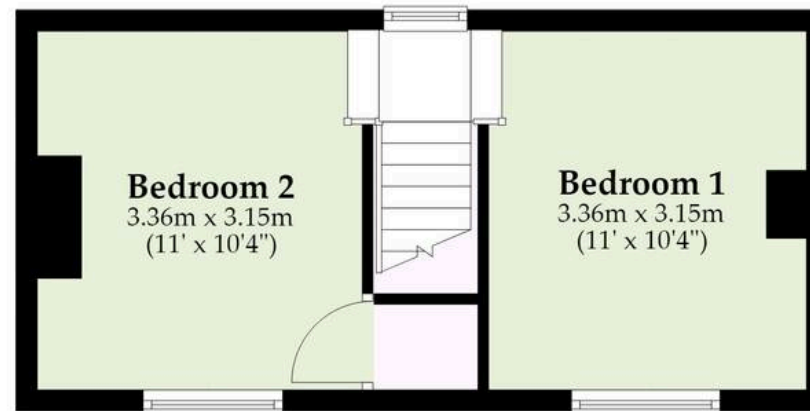
Ground Floor

Approx. 38.9 sq. metres (418.8 sq. feet)



First Floor

Approx. 24.8 sq. metres (266.9 sq. feet)



Total area: approx. 63.7 sq. metres (685.7 sq. feet)

Whilst every attempt has been made to ensure the accuracy of the floorplan contained here, measurements of doors, windows, rooms and any other items are approximate and no responsibility is taken for any error, omission or mis-statement. This plan is for illustrative purposes only and should be used as such by any prospective purchaser. The services, systems and appliances shown have not been tested and no guarantee as to their operability or efficiency can be given.

Plan produced using PlanUp.

Dreaming of this home?
Let's make it a *reality*.



Meet *Sarah*
Senior Property Consultant



Meet *Dan*
Branch Partner



Meet *Lauren*
Property Consultant

Minors & Brady
Your home, our market

 caister@minorsandbrady.co.uk

 01493 806188

 48 High Street, Caister-on-Sea, Great Yarmouth, NR30 5EH

BURY ST. EDMUNDS | CAISTER-ON-SEA | DEREHAM | DISS | NORWICH | OULTON BROAD | WROXHAM



How can we support

- ✓ Residential Mortgages
- ✓ Protection & Insurance
- ✓ Buy-to-let (personal and limited company)



Matt Waters
Director and
Principal



Victoria Payne
Mortgage and
Protection Advisor

Offering you quick and professional mortgage advice every step of the way.

T: 01603 210378
E: enquiries@norfolk-mortgages.co.uk