



78 Hollow Road, Bury St. Edmunds

Bury St. Edmunds



£325,000
Minors & Brady

78 Hollow Road

Bury St. Edmunds

A rare opportunity to secure a spacious bungalow on a generous corner plot in a sought-after Bury St Edmunds setting. This three-bedroom semi-detached home offers well-balanced, single-storey living with a bright and expansive lounge/diner at its heart. The layout is both practical and versatile, with a fitted kitchen and three good-sized bedrooms suited to a range of needs. Outside, the property truly excels, boasting ample off-road parking and a large, private rear garden perfect for relaxing or entertaining. Positioned within easy reach of the town centre, it combines everyday convenience with a quiet residential feel. An ideal choice for those seeking space, comfort and a well-connected location.

- Three-bedroom semi-detached bungalow
- Generous corner plot offering enhanced outdoor space
- Spacious and versatile lounge/diner
- Fitted kitchen with ample storage and workspace
- Three well-proportioned bedrooms
- Driveway providing off-road parking for multiple vehicles
- Enclosed rear garden with patio seating area
- Established planting creating a private outdoor setting
- Well-suited to single-storey living
- Convenient location within easy reach of Bury St Edmunds town centre





M&B

78 Hollow Road

Bury St. Edmunds

The Location

Located within the historic market town of Bury St Edmunds, this area offers a superb balance of heritage, convenience and lifestyle. Well known for its rich history, the town features striking architecture including a cathedral and the beautiful Abbey Gardens, creating a unique and attractive setting. The town centre provides a wide range of shops, cafés, restaurants and a traditional market, while larger supermarkets such as a Tesco Superstore cater for everyday needs.

Bury St Edmunds also offers a variety of cultural and leisure facilities, including theatres, galleries and seasonal events, contributing to its vibrant and welcoming atmosphere. The presence of a railway station ensures convenient connections to surrounding towns and cities, making it ideal for commuters and those looking to travel further afield.

Surrounded by green spaces and with easy access to the wider Suffolk countryside, the town appeals to those who enjoy outdoor living as well as modern conveniences. Overall, Bury St Edmunds combines historic charm with a well-connected and practical lifestyle, making it a consistently popular place to live.



M&B

78 Hollow Road

Bury St. Edmunds

Hollow Road, Bury St. Edmunds

This charming three-bedroom semi-detached bungalow occupies a generous corner plot within a desirable area of Bury St Edmunds, offering spacious and versatile accommodation ideal for a range of buyers. Well-presented throughout, the home provides a wonderful balance of practicality and comfort, with bright, well-proportioned rooms and an easy-flow layout suited to single-storey living.

Upon entering, a welcoming hallway leads through to the impressive lounge/diner, a particularly generous space that enjoys dual aspect light and direct access to the rear garden. This room offers excellent flexibility, whether used for relaxing, entertaining or dining, with a fireplace adding a focal point and warmth to the living space. The kitchen is well-appointed with a range of fitted units, ample worktop space and room for appliances, while also providing convenient access out to the garden.

The property offers three well-sized bedrooms, each thoughtfully arranged to provide comfortable accommodation. All three rooms benefit from good natural light and can easily adapt to suit individual needs, whether as bedrooms, guest space or a home office. The bathroom is fitted with a practical suite, completing the internal layout.



78 Hollow Road

Bury St. Edmunds

Externally, the bungalow truly stands out thanks to its substantial corner plot. The front garden provides a neat approach, alongside a driveway with space for multiple vehicles, ensuring ample off-road parking. To the rear, the enclosed garden is mainly laid to lawn and complemented by a patio seating area, creating a private and peaceful outdoor environment ideal for relaxing or entertaining. Established planting and greenery further enhance the setting, offering a pleasant outlook throughout the seasons.

Situated within easy reach of Bury St Edmunds town centre, the property benefits from excellent access to a wide range of shops, amenities and transport links, all while maintaining a quiet residential setting.

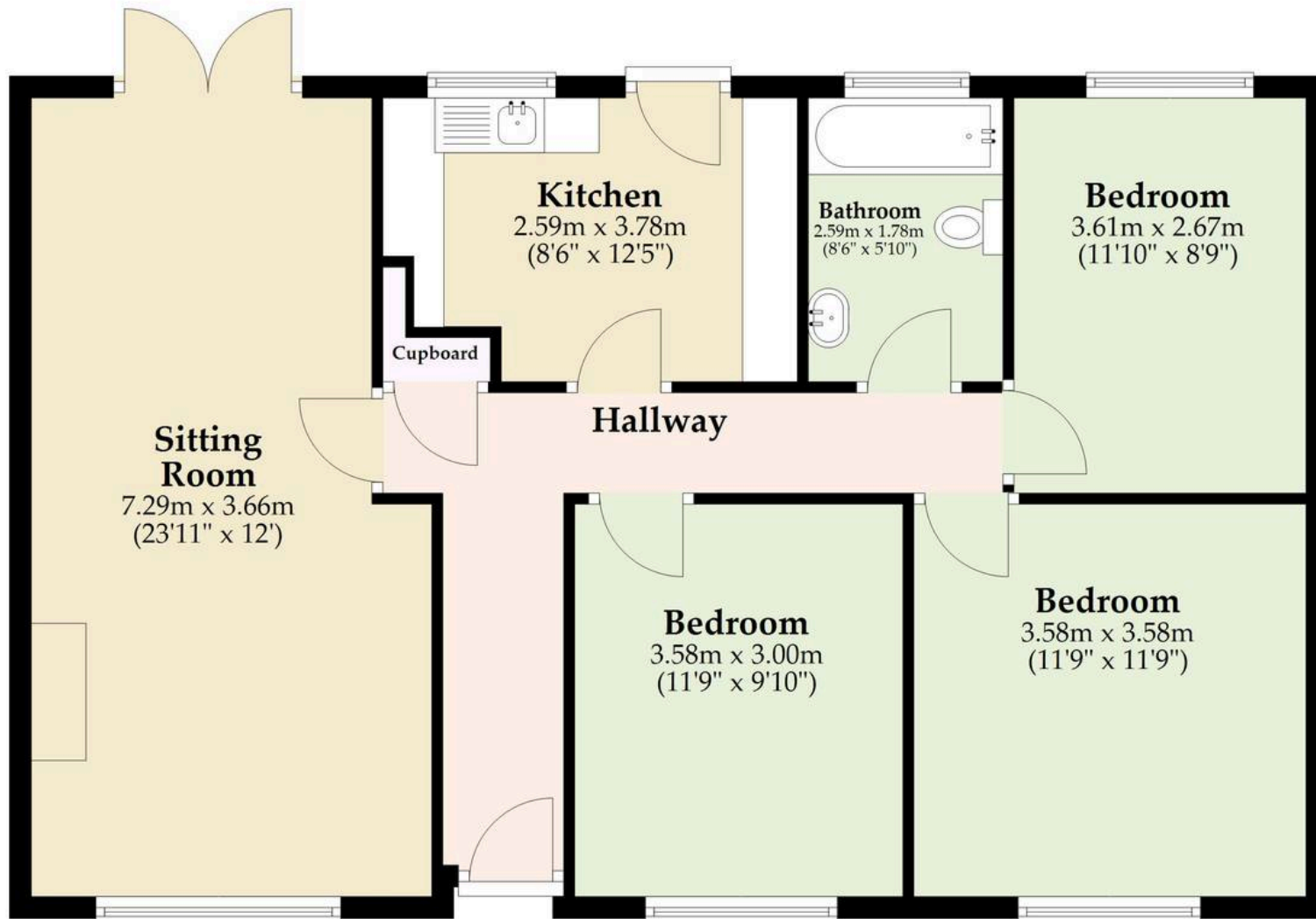
Agents Note

This property will be sold freehold and connected to mains water, electricity, gas and drainage.



Ground Floor

Approx. 84.4 sq. metres (908.9 sq. feet)



Total area: approx. 84.4 sq. metres (908.9 sq. feet)

Whilst every attempt has been made to ensure the accuracy of the floorplan contained here, measurements of doors, windows, rooms and any other items are approximate and no responsibility is taken for any error, omission or misstatement. This plan is for illustrative purposes only and should be used as such by any prospective purchaser. The services, systems and appliances shown have not been tested and no guarantee as to their operability or efficiency can be given.

Plan produced using PlanUp.

Dreaming of this home? Let's make it a *reality*.



Meet *Stuart*
Branch Manager



Meet *Chelsea*
Property Consultant



Meet *Lee*
Director

Minors & Brady
Your home, our market



burystedmunds@minorsandbrady.co.uk



01284 672200



2 St John's St, Bury St. Edmunds, IP33 1SQ

BURY ST. EDMUNDS | CAISTER-ON-SEA | DEREHAM | DISS | NORWICH | OULTON BROAD | WROXHAM



How can we support

- ✓ Residential Mortgages
- ✓ Protection & Insurance
- ✓ Buy-to-let (personal and limited company)



Matt Waters
Director and
Principal



Victoria Payne
Mortgage and
Protection Advisor

Offering you quick and professional mortgage advice every step of the way.

T: 01603 210378
E: enquiries@norfolk-mortgages.co.uk