



33 Jasmine Gardens, Bradwell

Great Yarmouth



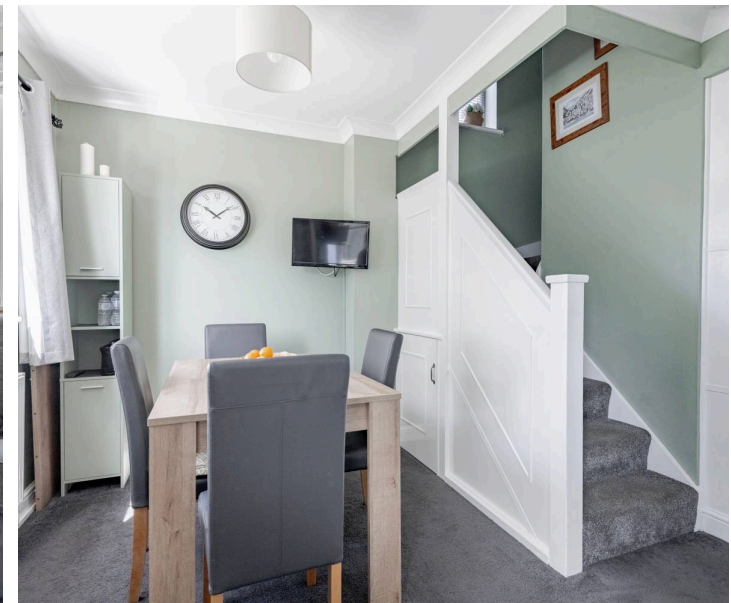
Minors & Brady

## 33 Jasmine Gardens

Bradwell, Great Yarmouth

Enjoying a peaceful cul-de-sac position with minimal passing traffic, this well-presented three-bedroom home offers spacious and practical accommodation, complemented by a south-facing rear garden, garage and off-road parking.

With local amenities, schools and a large nearby playing field all within easy reach, the property presents an excellent opportunity for families, first-time buyers and those seeking a quieter residential setting.



# 33 Jasmine Gardens

Bradwell, Great Yarmouth

- Three-bedroom family home positioned within a quiet cul-de-sac with minimal passing traffic
- Spacious sitting room featuring an attractive electric fireplace and excellent natural light
- Open-plan kitchen and dining area creating a sociable layout ideal for everyday family living
- Well-equipped kitchen with ample storage, built-in extractor hood and direct access to the rear garden
- Ground floor cloakroom and useful built-in storage cupboards off the entrance hall
- Three well-proportioned bedrooms, including two doubles with built-in storage
- Family bathroom fitted with a modern vanity unit and bath with rainfall shower attachment
- South-facing rear garden with mature planting, seating area and a high degree of privacy
- Garage with power, lighting and plumbing, alongside a private off-road parking space
- Convenient location within walking distance of local shops, schools and amenities, with a large playing field nearby

Council Tax band: C

Tenure: Freehold

EPC Energy Efficiency Rating: D

EPC Environmental Impact Rating: D



M&B

## 33 Jasmine Gardens

Bradwell, Great Yarmouth

### Location

Situated within a modern residential development in Bradwell, Jasmine Gardens enjoys a convenient location close to a wide range of local amenities. Bradwell is a popular area on the western side of Great Yarmouth, offering supermarkets, schools, healthcare facilities, and leisure amenities, all within easy reach. The nearby centres of Gorleston and Great Yarmouth provide an even broader selection of shopping, dining, and entertainment options.

The area benefits from good transport links, making travel across Norfolk and Suffolk straightforward, while the nearby coastline offers access to sandy beaches, scenic seafront walks, and outdoor recreational opportunities. Combining everyday convenience with access to both coastal and countryside attractions, this location provides an excellent setting for enjoying all that the local area has to offer.

### Jasmine Gardens

The accommodation is entered via a welcoming entrance hall, where useful built-in storage cupboards provide practical everyday space. A ground-floor WC adds further convenience. To the front of the property, the generous sitting room offers a comfortable environment for relaxing and entertaining, centred around an attractive electric fireplace and filled with natural light from the front-facing window.



## 33 Jasmine Gardens

Bradwell, Great Yarmouth

Flowing from the sitting room is the dining area, creating a sociable layout that works well for modern family life. The dining space offers room for a family-sized table and benefits from views over the rear garden. An opening leads through to the kitchen, which is fitted with a range of wall and base units, work surfaces, ample appliance space and useful built-in storage. A door from the kitchen provides direct access to the garden, making it ideal for indoor and outdoor entertaining during the warmer months. The first floor comprises three bedrooms, including two comfortable doubles which both benefit from built-in wardrobes. The third bedroom offers flexibility as a child's room, guest bedroom or home office. Completing the accommodation is a family bathroom fitted with a vanity unit and a bath with rainfall shower attachment.

Outside, the property continues to impress with its attractive south-facing rear garden. Designed to be both practical and enjoyable, it features a well-maintained lawn, mature planted borders and a shingle seating area that provides an ideal spot for outdoor dining or relaxing. The garden is fully enclosed, creating a private and secure environment. Additional benefits include external lighting, power sockets, an outdoor tap and pedestrian access to the garage.

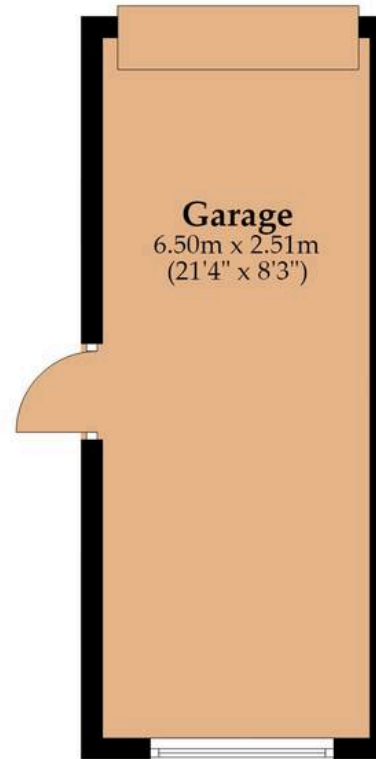
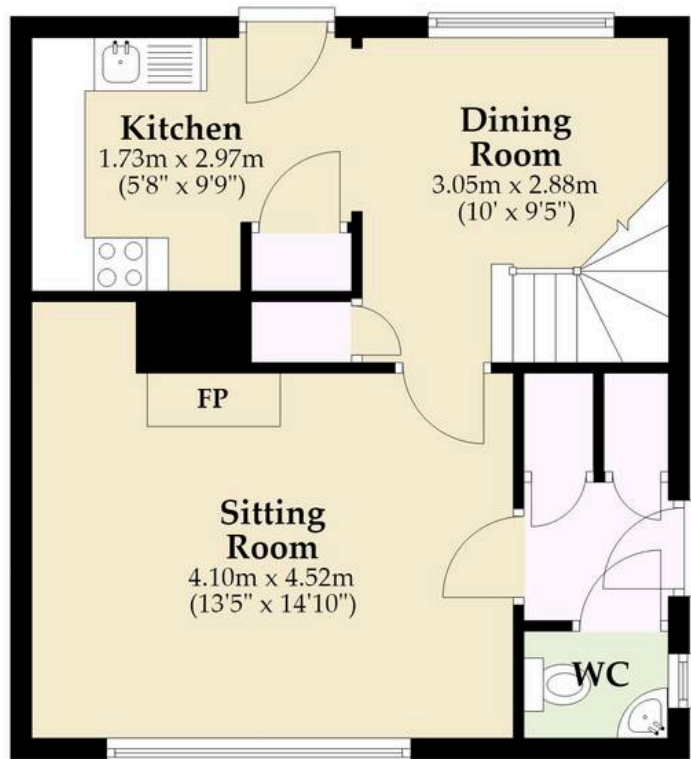
The garage offers excellent storage or parking potential and benefits from power, lighting and plumbing for additional appliances. Beyond the garage is a private off-road parking space, providing valuable parking provision.



M&B

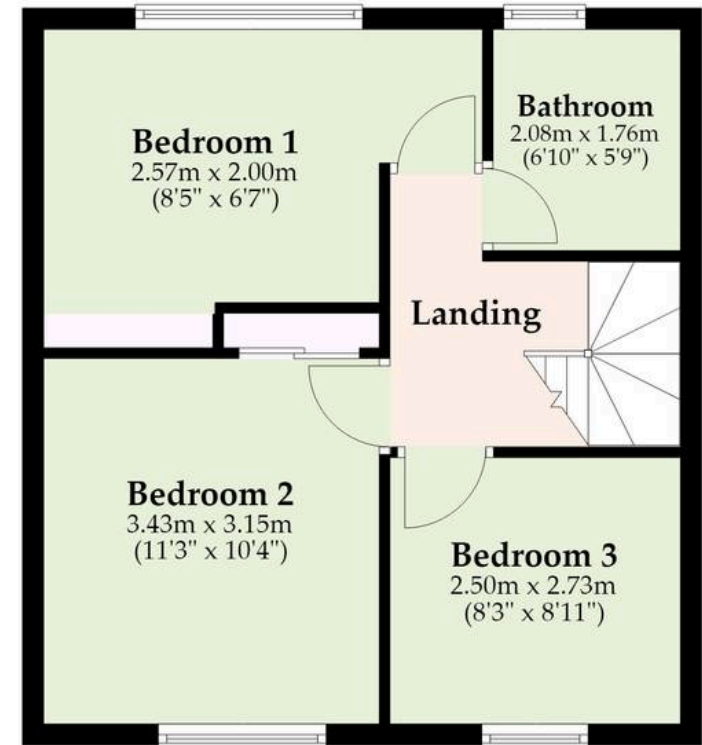
## Ground Floor

Approx. 55.8 sq. metres (600.1 sq. feet)



## First Floor

Approx. 39.0 sq. metres (420.3 sq. feet)



Total area: approx. 94.8 sq. metres (1020.4 sq. feet)

Whilst every attempt has been made to ensure the accuracy of the floorplan contained here, measurements of doors, windows, rooms and any other items are approximate and no responsibility is taken for any error, omission or mis-statement. This plan is for illustrative purposes only and should be used as such by any prospective purchaser. The services, systems and appliances shown have not been tested and no guarantee as to their operability or efficiency can be given.

Plan produced using PlanUp.

# Dreaming of this home? Let's make it a *reality*.



Meet *Sarah*  
Senior Property Consultant



Meet *Dan*  
Branch Partner



Meet *Lauren*  
Property Consultant

Minors & Brady  
*Your home, our market*

 [caister@minorsandbrady.co.uk](mailto:caister@minorsandbrady.co.uk)

 01493 806188

 48 High Street, Caister-on-Sea, Great Yarmouth, NR30 5EH

BURY ST. EDMUNDS | CAISTER-ON-SEA | DEREHAM | DISS | NORWICH | OULTON BROAD | WROXHAM



## How can we support

- ✓ Residential Mortgages
- ✓ Protection & Insurance
- ✓ Buy-to-let (personal and limited company)



**Matt Waters**  
Director and  
Principal



**Victoria Payne**  
Mortgage and  
Protection Advisor

Offering you quick and professional mortgage advice every step of the way.

T: 01603 210378  
E: [enquiries@norfolk-mortgages.co.uk](mailto:enquiries@norfolk-mortgages.co.uk)