



8 Norfolk Street, Lowestoft

In Excess of £130,000

8 Norfolk Street

Lowestoft

This refurbished mid-terrace home is the perfect opportunity for first time buyers or an investment purchase. Conveniently located in the seaside town of Lowestoft, in close proximity to all local amenities and natural surroundings. Its accommodation consists of a two reception rooms, kitchen, bathroom and three bedrooms. Externally you will find on road parking and an extensive rear garden.

LOCATION

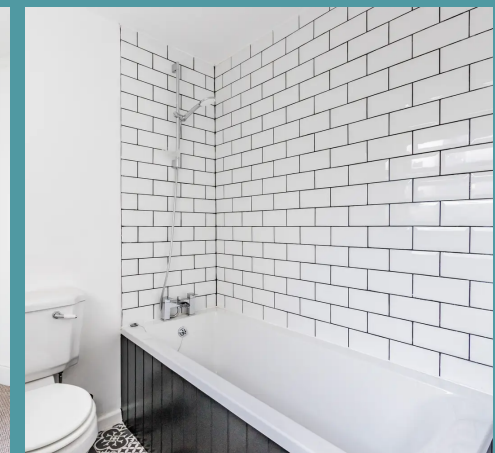
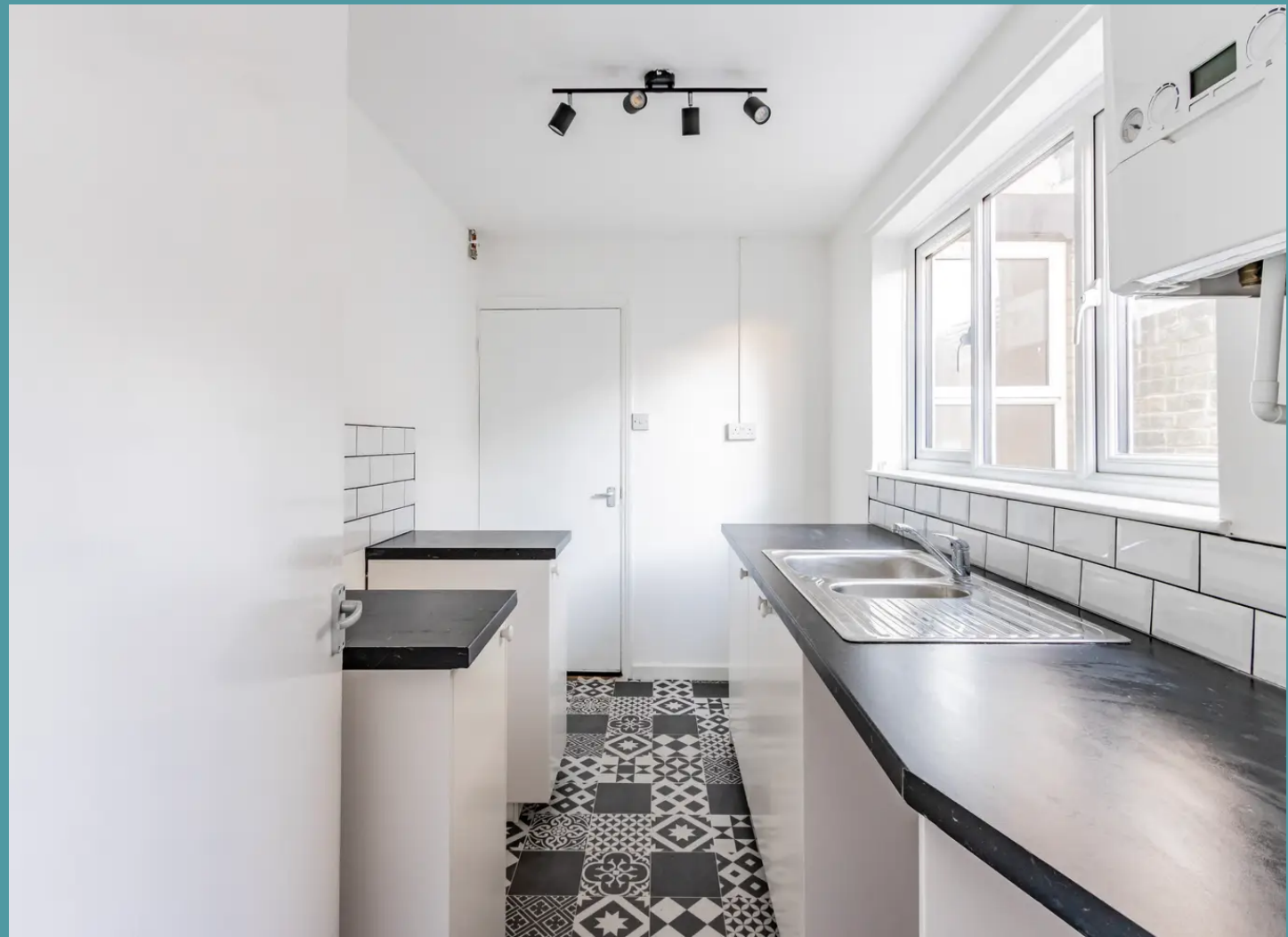
This home is located on the most easterly point of the British Isles, in the traditional seaside town of Lowestoft. This wonderful seaside destination is steeped in history and offers a delightful blend of coastal allure and urban convenience. With its Blue Flag award-winning sandy beaches, Victorian seafront gardens and two charming piers, residents are treated to strolls along the shore and tranquil moments amidst nature's beauty. There are a number of schools in the area to suit all ages, a range of amenities including a Post Office, Bus Station and Train Station, which both run regular services to Norwich and plenty of shopping facilities and restaurants.

AGENTS NOTES

We understand that this property is freehold. Connected to mains water, electricity, gas and drainage.

Heating system - Gas Central Heating

Council Tax Band: A



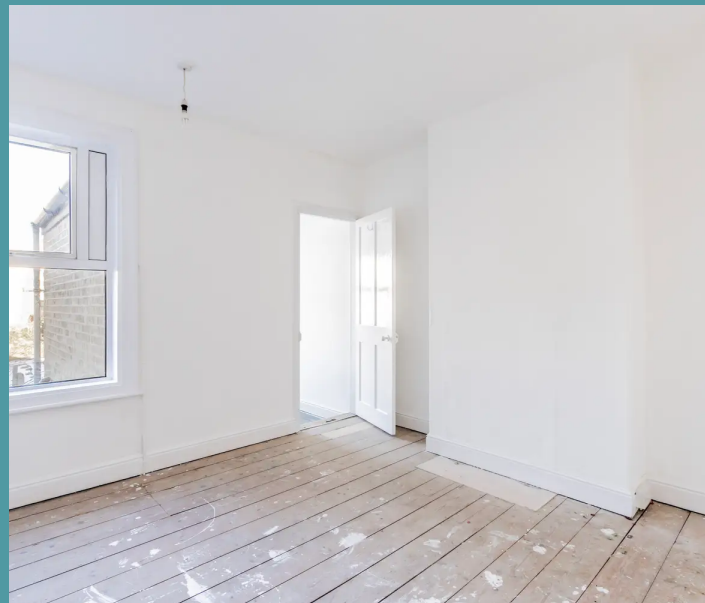
8 Norfolk Street

Lowestoft

Step inside where you are instantly greeted by two reception rooms, where you can showcase your comfortable furniture and dining set-up. These are perfect for family living or friend and family gatherings. The kitchen is fitted with new units and worktops, with under counter spaces for your appliances, to be able to enjoy your favourite meals. Located on the ground floor is a modern bathroom, comprising of a three piece suite, accommodating all family members and guests.

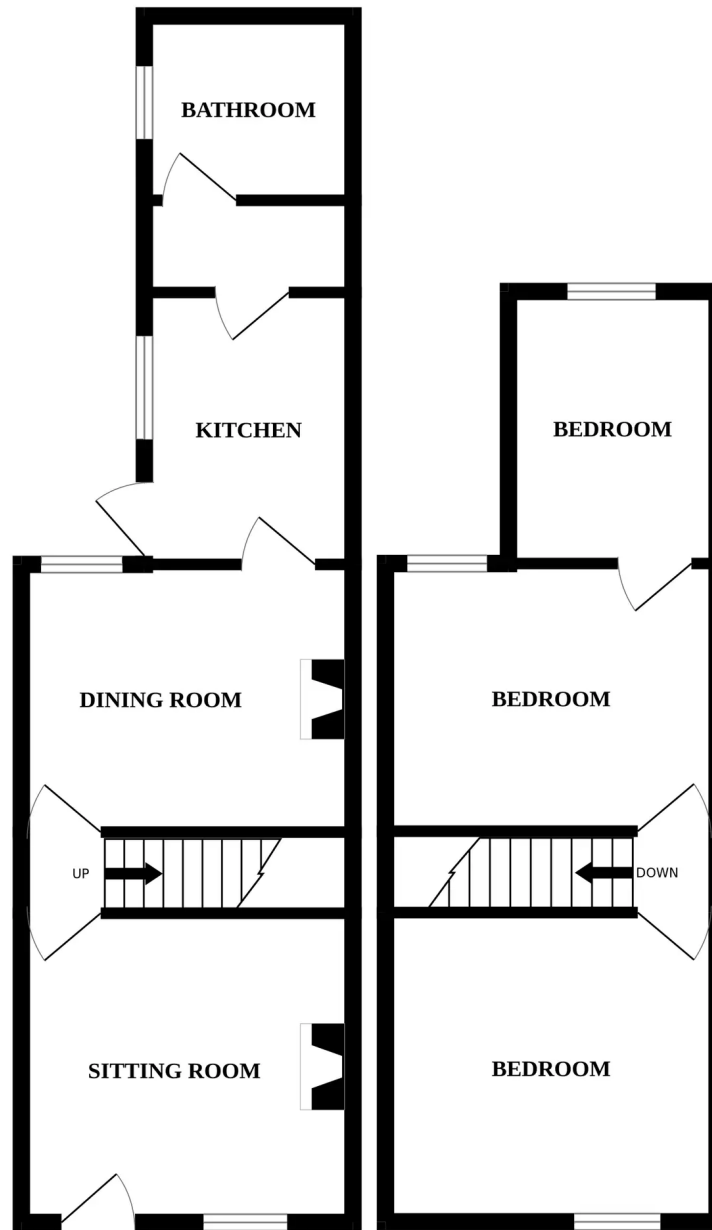
Heading upstairs you will find three bedrooms, designed to offer you relaxation and privacy. The third bedroom can be versatile, with potential to be an office, dressing room or spare bedroom.

At the front of the property is on road parking available, with gated access to your entrance door. Towards the rear is an extensive garden, offering endless possibilities for you to make it your own. It is fully enclosed so you can enjoy in seclusion.



GROUND FLOOR

1ST FLOOR



Whilst every attempt has been made to ensure the accuracy of the floorplan contained here, measurements of doors, windows, rooms and any other items are approximate and no responsibility is taken for any error, omission or mis-statement. This plan is for illustrative purposes only and should be used as such by any prospective purchaser. The services, systems and appliances shown have not been tested and no guarantee as to their operability or efficiency can be given.
Made with Metropix ©2024