



3 Magnolia Mews, Swanton Morley

Dereham



Minors & Brady

3 Magnolia Mews

Swanton Morley, Dereham

Exclusively for the over 60s, this well-presented bungalow forms part of a welcoming development designed for independent living, with the added reassurance of on-site facilities and a supportive community environment. Offering comfortable single-storey accommodation, the property is ideal for those looking to enjoy a safe, manageable and sociable lifestyle. The bright open-plan lounge and dining area creates a warm and inviting space, with direct access to the garden for easy indoor-outdoor living. A modern kitchen and practical wet room further enhance day-to-day convenience, ensuring the home is both functional and accessible throughout. Two well-proportioned bedrooms provide flexible space for guests, hobbies or relaxation. Set within a sought-after village location, this home combines peace of mind with independence, making it a wonderful place to enjoy later life.

- Low-maintenance plot
- Exclusively for over 60s independent living development
- Bright open-plan lounge and dining area
- French doors opening onto the rear garden
- Fully fitted kitchen with integrated appliances
- Accessible wet room with bath and shower
- Two well-proportioned bedrooms with built-in storage
- Off-road parking to the front
- Private rear garden with generous patio area
- Sought-after village location with on-site facilities



M&B



M&B

3 Magnolia Mews

Swanton Morley, Dereham

The Location

Set in the heart of Swanton Morley, this home enjoys a peaceful village setting that is particularly well suited to those seeking a relaxed and community-oriented lifestyle. Combining the charm of the Norfolk countryside with everyday convenience, the village provides an ideal environment for over 60s looking to remain independent while benefiting from easy access to local services.

Swanton Morley offers a strong sense of community, with a range of amenities all within easy reach. These include a local shop and post office, a well-regarded butcher and delicatessen, a doctor's surgery and other essential services that support comfortable day-to-day living. The village also hosts a variety of social activities and events throughout the year, creating opportunities to stay active and connected within a friendly and welcoming environment.

For those who enjoy dining out or meeting friends, the village pub provides a popular spot for food, drinks and regular social gatherings. Community groups and clubs, including bowls and other leisure activities, further enhance the appeal for those looking to enjoy a sociable and fulfilling lifestyle.

Despite its tranquil setting, Swanton Morley remains well connected. The nearby market town of Dereham is just a short drive away, offering a wider selection of shops, supermarkets, cafés and healthcare facilities. For those wishing to travel further afield, Norwich is within comfortable reach, providing access to excellent transport links, cultural attractions and extensive amenities.



3 Magnolia Mews

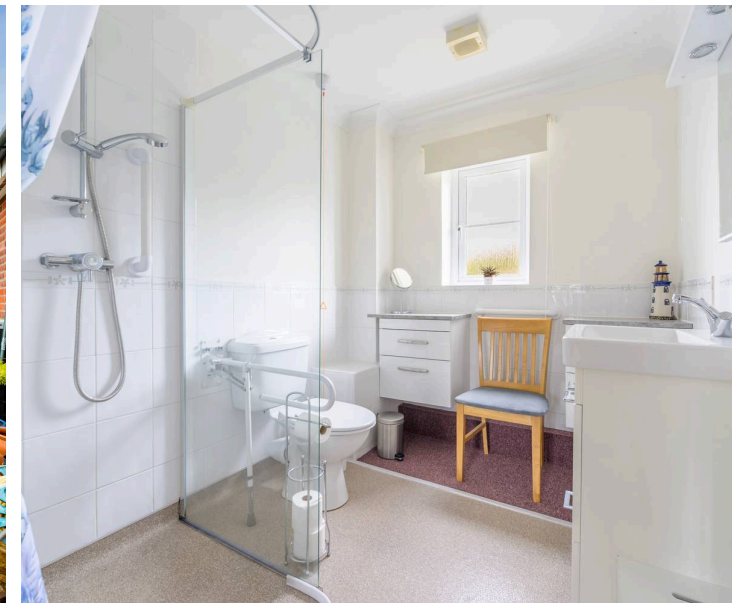
Swanton Morley, Dereham

Magnolia Mews, Swanton Morley

Set within the well-regarded Norfolk village of Swanton Morley, this immaculately presented two-bedroom bungalow offers comfortable, accessible living in a peaceful and well-connected setting. Thoughtfully maintained and designed with ease of living in mind, the property is perfectly suited to those seeking a low-maintenance home without compromising on space or natural light.

Upon entering, a welcoming hallway provides access to all principal rooms, creating a practical and easy-flowing layout throughout. At the heart of the home is a bright and spacious open-plan lounge and dining area, a sociable space ideal for both relaxation and entertaining. This room benefits from generous proportions, a feature fireplace with electric fire and French doors that open out onto the rear garden, allowing natural light to flood the space while offering a seamless connection to the outdoors.

The kitchen is fully fitted with a range of wall and base units, complemented by worktop space and tiled splashbacks. It includes integrated cooking appliances as well as space for additional white goods, creating a functional and well-equipped environment for everyday use. A front-facing window ensures the room remains light and airy.



M&B

3 Magnolia Mews

Swanton Morley, Dereham

The bungalow offers two well-proportioned bedrooms, both bright and comfortable. Each benefits from built-in storage, while the positioning of the rooms, one to the front and one to the rear, adds a sense of privacy and flexibility depending on individual needs. The accommodation is completed by a family bathroom that has been adapted into a practical wet room, featuring both a bath and shower, making it particularly well suited for those requiring accessible facilities.

Externally, the property continues to impress with its generous yet low-maintenance plot. To the front, a neatly kept lawn with planted borders creates an attractive first impression, while a pathway with supportive handrails enhances accessibility. A driveway provides off-road parking for one vehicle. To the rear, the garden is thoughtfully arranged with a spacious patio area that extends from the living space—perfect for outdoor seating and dining, alongside a lawn section bordered by established planting, offering a pleasant and private environment to relax and enjoy.

Combining bright interiors, practical design and a sought-after village location, this delightful bungalow presents an ideal opportunity for those looking for easy, single-level living in a welcoming community setting.

Agents Note

This property will be sold freehold and connected to mains water, electricity, LPG and drainage.



M&B

Ground Floor

Approx. 60.3 sq. metres (648.7 sq. feet)
(excluding Shower Room)



Total area: approx. 60.3 sq. metres (648.7 sq. feet)

Whilst every attempt has been made to ensure the accuracy of the floorplan contained here, measurements of doors, windows, rooms and any other items are approximate and no responsibility is taken for any error, omission or mis-statement. This plan is for illustrative purposes only and should be used as such by any prospective purchaser. The services, systems and appliances shown have not been tested and no guarantee as to their operability or efficiency can be given.

Plan produced using PlanUp.

Dreaming of this home? Let's make it a *reality*.



Meet *Kyle*
Branch Manager



Meet *Aysegul*
Aftersales Progressor



Meet *Curtis*
Listings Director

Minors & Brady

Your home, our market

 dereham@minorsandbrady.co.uk

 01362 700820

 9a Market Place, Dereham, NR19 2AW

CAISTER-ON-SEA | DEREHAM | DISS | NORWICH | OULTON BROAD | WROXHAM



How can we support

- ✓ Residential Mortgages
- ✓ Protection & Insurance
- ✓ Buy-to-let (personal and limited company)



Matt Waters
Director and
Principal



Victoria Payne
Mortgage and
Protection Advisor

Offering you quick and professional mortgage advice every step of the way.

T: 01603 210378
E: enquiries@norfolk-mortgages.co.uk