



7 St. Georges Road, Pakefield

Lowestoft



Minors & Brady

7 St. Georges Road

Pakefield, Lowestoft

This inviting mid-terrace home offers a warm and well-considered living environment just moments from the beach and everyday amenities. Its key features include a bright open-plan living and dining space with skylights, a versatile front room ideal as a home study, a modern kitchen opening directly to the garden, two comfortable bedrooms and a contemporary bathroom with stylish finishes. The private rear garden is beautifully maintained, with multiple seating areas, established planting and a timber shed, while on-street parking adds welcome practicality. Altogether, it's a well-presented home offering comfort, convenience and an appealing lifestyle in a popular residential setting.

- Mid-terrace residence positioned down a residential road in the coastal area of Pakefield
- Suitable choice for first-time buyers or investors!
- Walking distance to the beach and easy access to essential amenities
- Flexible reception room/study, suitable for someone who works from home
- Extended open-plan living/dining room creating an effortless flow for everyday living and entertaining
- Kitchen equipped with modern cabinetry, an integrated oven, areas for your appliances, a skylight and sliding doors
- Two bedrooms offering comfort and privacy
- Contemporary bathroom comprising of a quality three-piece suite and patterned flooring
- A private, beautifully maintained garden featuring several seating areas, established beds, colourful planting and a timber shed
- On-street parking



M&B



M&B

7 St. Georges Road

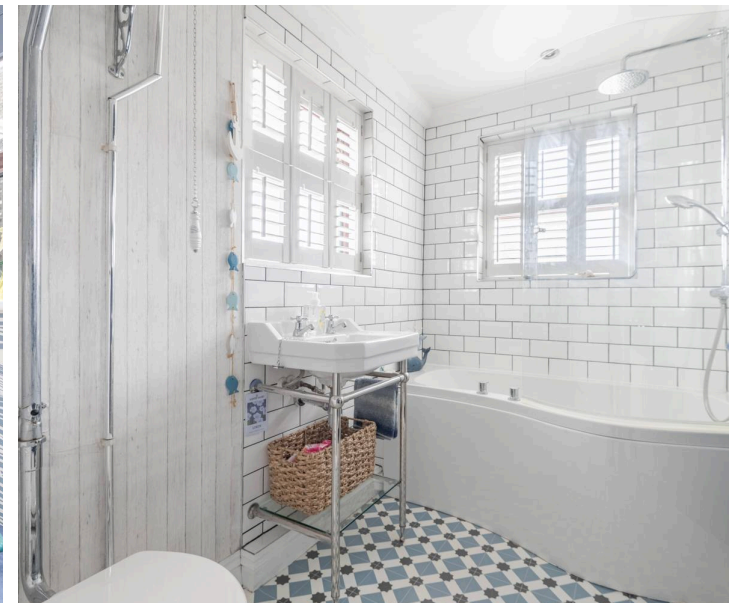
Pakefield, Lowestoft

Location

St. Georges Road in Pakefield offers a lifestyle shaped by calm residential living, walkable convenience, and the easy rhythm of the Suffolk coast. Set within the popular Kirkley/Pakefield area, the road sits just moments from everyday essentials, independent cafés, takeaways, corner shops, and friendly local services that give the neighbourhood its warm, lived-in character. Larger supermarkets and retail parks such as North Quay and Tower Road are only a short drive away, making weekly shopping simple without losing the charm of a community-focused setting.

Families enjoy strong access to nearby schools, with several well-regarded primaries and Pakefield High School all within comfortable walking distance. This creates a practical, low-stress routine for school runs and after-school activities. The area's flat, walkable layout also encourages an active lifestyle, whether it's cycling through quiet residential streets or strolling down to the seafront.

The coastline is the real lifestyle anchor here. Within minutes, you can reach Lowestoft's long sandy beaches, clifftop paths, and wide-open sea views, perfect for morning runs, dog walks, or relaxed weekend downtime. The promenade and nearby parks add to the outdoor appeal, offering green spaces and coastal air right on the doorstep.



M&B

7 St. Georges Road

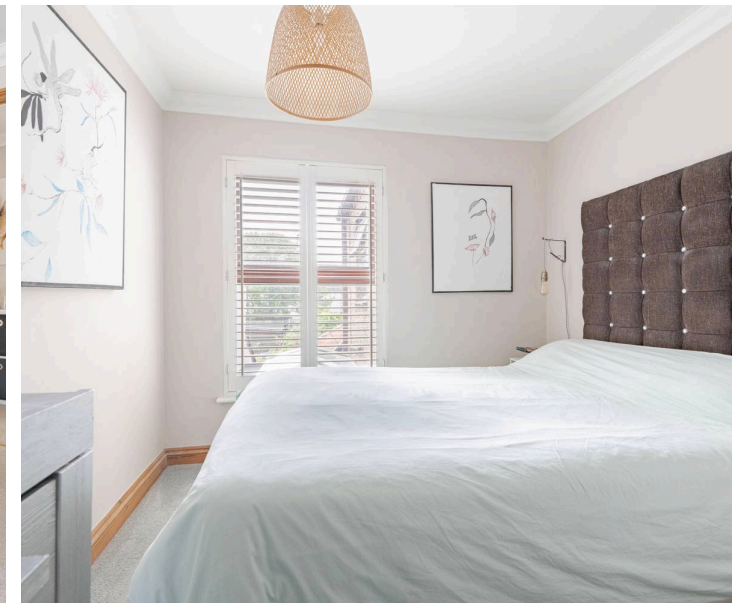
Pakefield, Lowestoft

A well-kept mid-terrace home tucked along a quiet residential road in Pakefield, this property offers an inviting balance of coastal living and everyday convenience. With the beach just a short stroll away and essential amenities close at hand, it presents an appealing opportunity for first-time buyers or investors seeking a practical, well-located residence.

The entrance hall creates a warm first impression and leads to a versatile front reception room that works effortlessly as a study space, ideal for those who work from home or want a peaceful corner separate from the main living areas. Beyond this, the extended open-plan living and dining room forms the heart of the home, arranged to encourage relaxed daily living and sociable gatherings. A skylight draws in natural light, enhancing the sense of openness and connection throughout.

The kitchen continues this bright, modern feel with contemporary cabinetry, an integrated oven, dedicated appliance areas, a second skylight and sliding doors that open directly to the garden, creating a seamless link between indoor and outdoor spaces.

Upstairs, two comfortable bedrooms offer privacy and calm, making the home well suited to individuals, couples or small households. The bathroom has been finished in a contemporary style, featuring a quality three-piece suite and patterned flooring that adds a touch of character.



M&B

7 St. Georges Road

Pakefield, Lowestoft

The rear garden is a standout feature, private, beautifully maintained and arranged with several seating areas, established beds and colourful planting. It provides a peaceful retreat for morning coffee, summer dining or simply enjoying time outdoors. A timber shed offers useful storage, and on-street parking is available to the front.

Altogether, this is a home that combines comfort, practicality and a desirable coastal setting, offering a well-rounded choice for those looking to settle in or invest in this popular seaside town.

Agents Notes

Freehold

Connected to mains water, electricity, gas and drainage.

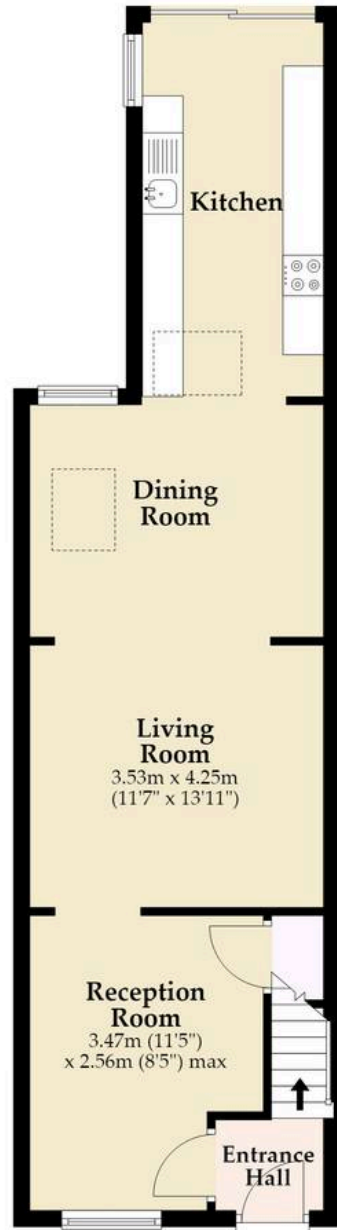
Gas central heating system.

On-street parking (Minors & Brady are unable to verify this information).



Ground Floor

Approx. 25.2 sq. metres (270.7 sq. feet)
(excluding Dining Room, Kitchen)



First Floor

Approx. 26.2 sq. metres (282.1 sq. feet)
(excluding Landing)



Total area: approx. 51.4 sq. metres (552.8 sq. feet)

Whilst every attempt has been made to ensure the accuracy of the floorplan contained here, measurements of doors, windows, rooms and any other items are approximate and no responsibility is taken for any error, omission or mis-statement. This plan is for illustrative purposes only and should be used as such by any prospective purchaser. The services, systems and appliances shown have not been tested and no guarantee as to their operability or efficiency can be given.

Plan produced using PlanUp.

Dreaming of this home? Let's make it a *reality*.



Meet *Macey*
Branch Manager



Meet *Bradley*
Senior Property Lister



Meet *Ollee*
Senior Property Consultant

Minors & Brady
Your home, our market

 oultonbroad@minorsandbrady.co.uk

 01502 447788

 Ivy Lane, Oulton Broad, NR33 8QH

BURY ST. EDMUNDS | CAISTER-ON-SEA | DEREHAM | DISS | NORWICH | OULTON BROAD | WROXHAM



How can we support

- ✓ Residential Mortgages
- ✓ Protection & Insurance
- ✓ Buy-to-let (personal and limited company)



Matt Waters
Director and
Principal



Victoria Payne
Mortgage and
Protection Advisor

Offering you quick and professional mortgage advice every step of the way.

T: 01603 210378
E: enquiries@norfolk-mortgages.co.uk