



24 Plasset Drive, Attleborough

Attleborough



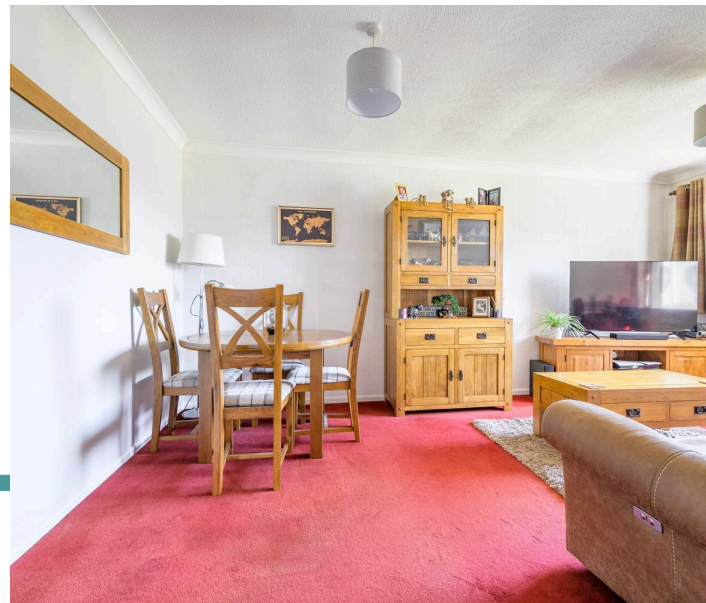
Minors & Brady

# 24 Plasset Drive

## Attleborough

A fantastic opportunity to acquire a detached bungalow offering generous living space, ample parking and a private enclosed garden in a peaceful Attleborough setting. Well presented throughout, the property features two comfortable double bedrooms, a modernised bathroom and a bright kitchen with excellent storage. The spacious lounge/diner provides a welcoming and versatile reception area, ideal for both everyday living and entertaining. Outside, the enclosed rear garden offers a delightful space to relax, with lawn and patio areas creating an attractive outdoor environment. A generous driveway provides off-road parking for several vehicles, complemented by a useful single garage. Combining practicality, comfort and a sought-after location, this appealing bungalow is perfectly suited to a range of buyers.

- Detached bungalow in a peaceful and popular Attleborough location.
- Two well-proportioned double bedrooms.
- Spacious and bright lounge/diner ideal for relaxing and entertaining.
- Modern fitted kitchen with ample storage and workspace.
- Contemporary bathroom with bath and shower over.
- Generous driveway providing off-road parking for multiple vehicles.
- Single garage offering additional parking or storage space.
- Enclosed rear garden with lawn and patio areas.
- Well-maintained throughout and ready to move straight into.
- Convenient single-storey living suited to a wide range of buyers.





M&B

## The Location

Situated in the thriving Norfolk market town of Attleborough, the property enjoys a highly convenient location that combines everyday practicality with the charm and character of traditional market town living.

Attleborough has grown in popularity in recent years thanks to its excellent range of amenities, strong transport links and welcoming community atmosphere. The bustling town centre offers an excellent selection of independent shops, cafés, restaurants, public houses and local businesses, complemented by a regular market that continues a long-standing local tradition.

The town is particularly well served for everyday needs, with supermarkets including Sainsbury's, healthcare facilities, leisure amenities and a wide range of services all readily available. Families are also drawn to the area by the availability of schooling and recreational opportunities.

For commuters, Attleborough benefits from a mainline railway station providing regular services to Norwich, Cambridge and London. The A11 is also easily accessible, offering excellent road connections to Norwich, Thetford, Cambridge and beyond.

Surrounded by attractive Norfolk countryside, the area provides abundant opportunities for walking, cycling and outdoor pursuits. Nearby Thetford Forest, one of the largest lowland pine forests in Britain, offers miles of trails, cycling routes, wildlife habitats and outdoor activities suitable for all ages.

Attleborough is also well positioned for access to some of Norfolk's most popular destinations. The historic city of Norwich, with its extensive shopping, dining, cultural and entertainment facilities, is within easy reach, while the renowned Norfolk Broads and beautiful coastline can be enjoyed for day trips and weekends away.



# 24 Plasset Drive

Attleborough

## Plassat Drive, Attleborough

This well-presented detached bungalow occupies a peaceful position within a popular area of Attleborough, offering comfortable single-storey living with well-balanced accommodation, generous outside space and excellent practicality. Ideal for a range of buyers, the property combines bright and welcoming interiors with the convenience of ample parking, a garage and an enclosed rear garden.

The accommodation is arranged around a central hallway and has been designed with ease of living in mind. The spacious lounge/diner provides an excellent reception space, filled with natural light from the front-facing windows and offering plenty of room for both relaxing and entertaining. Whether enjoying a quiet evening at home or hosting family and friends, the room provides a versatile and inviting setting.

The kitchen is both practical and well-appointed, fitted with a range of storage units and complemented by generous work surface space. Designed to cater for everyday living, it offers a bright and functional environment for cooking while maintaining a pleasant outlook.



# 24 Plasset Drive

Attleborough

The bungalow benefits from two comfortable double bedrooms, both positioned towards the rear of the property and enjoying views over the garden. Each room offers ample space for bedroom furniture, making them ideal for homeowners, guests or those seeking a dedicated home office alongside their living accommodation.

Serving the property is a stylishly modernised bathroom, fitted with a contemporary suite including a bath with shower over, creating a comfortable and attractive space for daily use.

Outside, the property continues to impress. To the front, a generous driveway provides off-road parking for several vehicles and leads to the single garage, offering additional storage or parking options. The front garden is neatly laid to lawn, creating an attractive approach to the home.

The enclosed rear garden provides a wonderful outdoor retreat, with a combination of lawn and patio areas offering space to relax, entertain or enjoy gardening. Well-proportioned and easy to maintain, the garden enjoys a private feel and presents an ideal setting for outdoor dining during the warmer months.

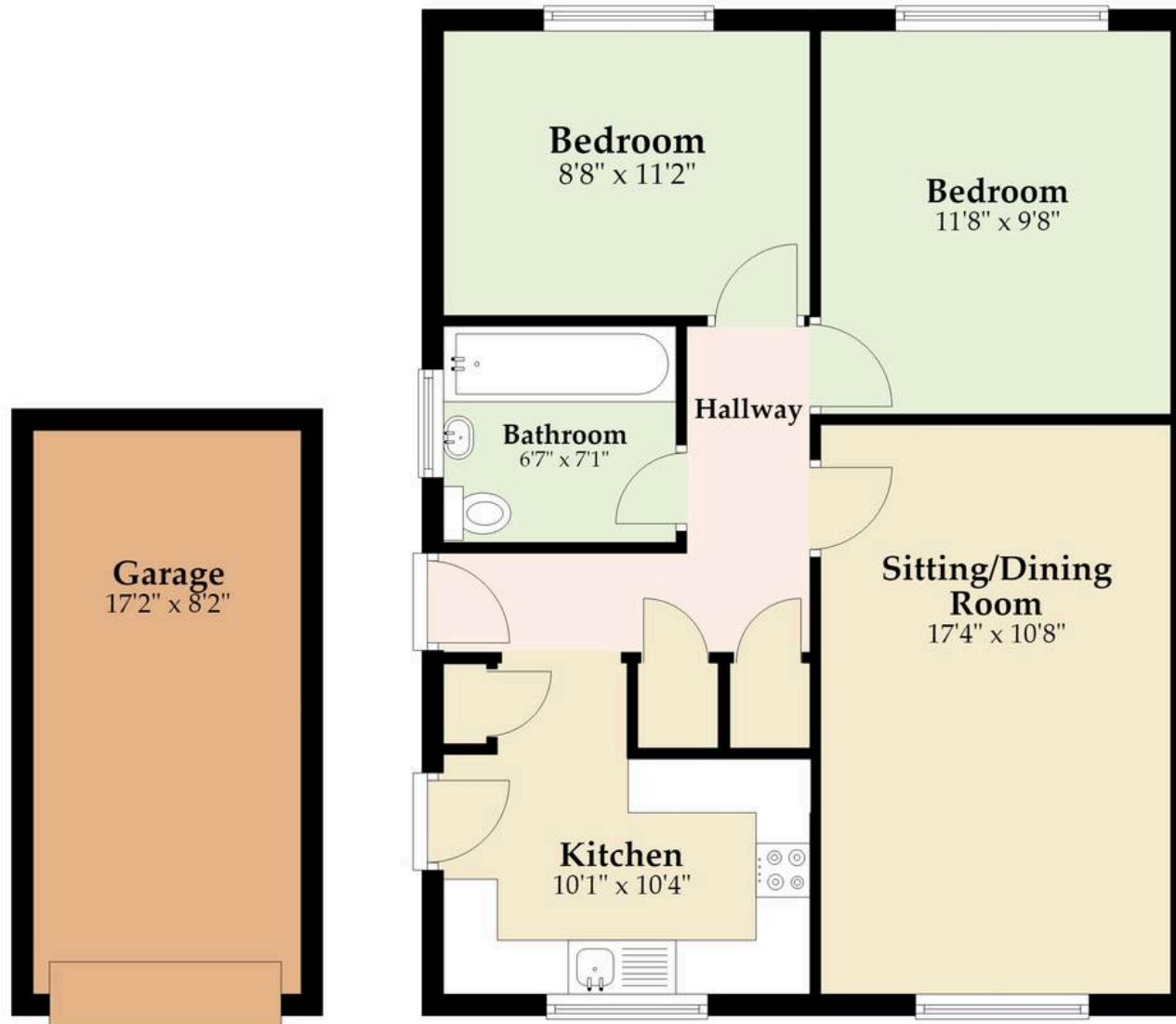
## Agents Note

This property will be sold freehold and connected to mains water, electricity, gas and drainage.



## Ground Floor

Approx. 770.0 sq. feet



Total area: approx. 770.0 sq. feet

**M&B**

Whilst every attempt has been made to ensure the accuracy of the floorplan contained here, measurements of doors, windows, rooms and any other items are approximate and no responsibility is taken for any error, omission or mis-statement. This plan is for illustrative purposes only and should be used as such by any prospective purchaser. The services, systems and appliances shown have not been tested and no guarantee as to their operability or efficiency can be given.

Plan produced using PlanUp.

# Dreaming of this home? Let's make it a *reality*.



Meet *Nicola*  
Branch Manager



Meet *Theo*  
Property Consultant



Meet *Anya*  
Aftersales Progressor

Minors & Brady  
*Your home, our market*

 [diss@minorsandbrady.co.uk](mailto:diss@minorsandbrady.co.uk)

 01379 771444

 46-47 Mere St, Diss, IP22 4AG

BURY ST. EDMUNDS | CAISTER-ON-SEA | DEREHAM | DISS | NORWICH | OULTON BROAD | WROXHAM



## How can we support

- ✓ Residential Mortgages
- ✓ Protection & Insurance
- ✓ Buy-to-let (personal and limited company)



**Matt Waters**  
Director and  
Principal



**Victoria Payne**  
Mortgage and  
Protection Advisor

Offering you quick and professional mortgage advice every step of the way.

T: 01603 210378  
E: [enquiries@norfolk-mortgages.co.uk](mailto:enquiries@norfolk-mortgages.co.uk)