



21 Stable Field Way, Hemsby

Great Yarmouth



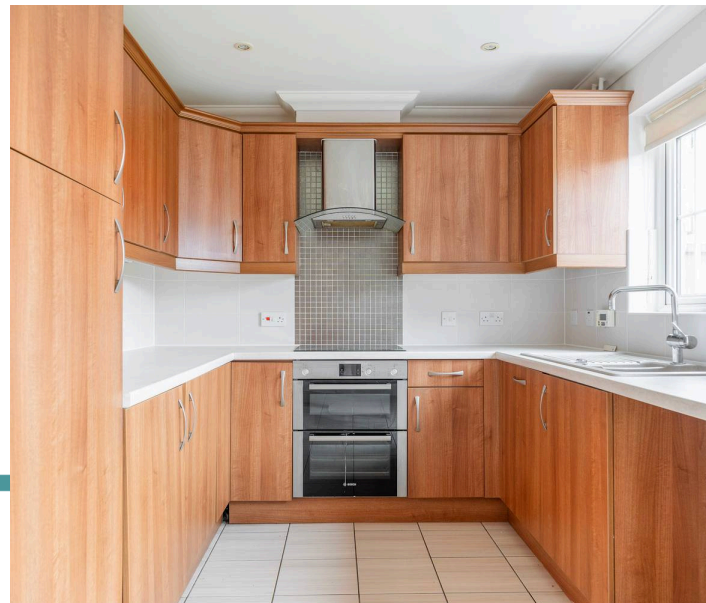
Minors & Brady

21 Stable Field Way

Hemsby, Great Yarmouth

Modern, spacious and ready to move straight into, this beautifully presented Norfolk Homes property offers the perfect blend of comfort, practicality and energy-efficient living. Built in 2008 and nestled within a quiet and sought-after residential development, the home provides deceptively generous accommodation throughout. The well-designed layout includes three bedrooms, a spacious sitting room, a contemporary kitchen/dining room with integrated appliances and a principal bedroom with en-suite shower room. Underfloor heating across the ground floor, attractive presentation and built-in storage enhance everyday living. Outside, a private enclosed garden, garage and allocated parking complete the package. An excellent first purchase or family home, early viewing is highly recommended.

- Built in 2008 by the highly regarded Norfolk Homes
- Deceptively spacious mid-terrace home in a quiet residential setting
- Three well-proportioned bedrooms, all benefiting from built-in storage
- Principal bedroom with private en-suite shower room
- Spacious dual-aspect sitting room filled with natural light
- Modern kitchen/dining room with integrated Bosch double oven, ceramic hob and extractor
- Underfloor heating throughout the ground floor
- Enclosed, low-maintenance rear garden with direct access to parking and garage
- Brick-built single garage with power, lighting and allocated parking space
- Ideal first-time purchase or family home, presented in excellent order throughout



M&B



M&B

21 Stable Field Way

Hemsby, Great Yarmouth

Stable Field Way, Hemsby

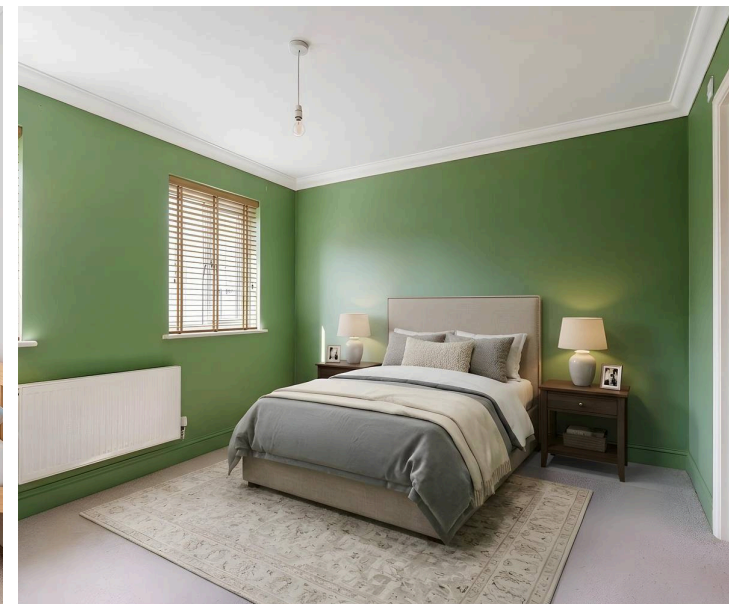
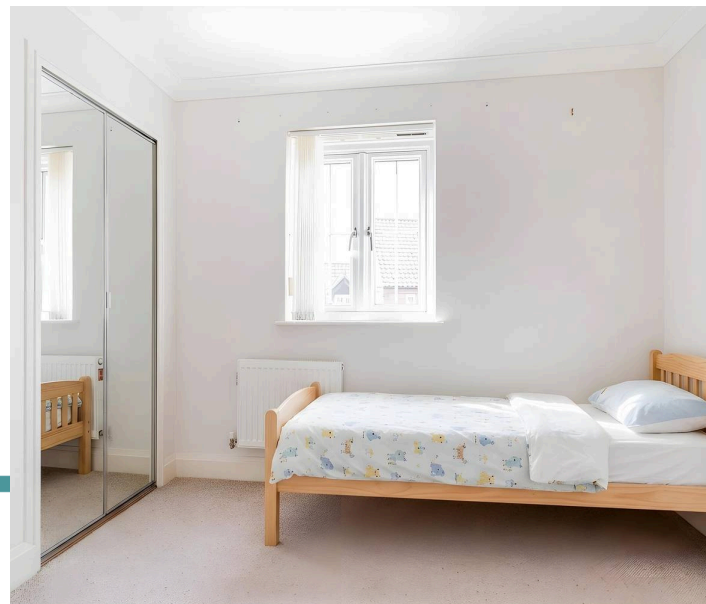
Situated within a quiet and desirable residential development, this deceptively spacious mid-terrace home was constructed in 2008 by the well-regarded Norfolk Homes and offers beautifully balanced accommodation ideally suited to first-time buyers, growing families and those seeking a well-connected village lifestyle. Thoughtfully designed with energy efficiency in mind, the property benefits from oil-fired central heating with underfloor heating throughout the ground floor, double glazing and a practical layout that makes excellent use of the available space.

The property is approached via a low-maintenance front garden with attractive planted borders and a pathway leading to the entrance. Upon entering, a welcoming hallway provides access to the principal living spaces and includes useful understairs storage.

The sitting room is a particularly inviting space, enjoying plenty of natural light through twin front-facing windows. Generously proportioned, it provides ample room for comfortable seating and everyday family living, with the wall-mounted electric fire creating an attractive focal point.

To the rear of the property, the kitchen and dining room forms the heart of the home. Designed to accommodate modern family life, the room combines a practical cooking space with room for dining and entertaining.

A comprehensive range of wall and base units provides excellent storage, complemented by extensive work surfaces and integrated Bosch cooking appliances including a double oven, ceramic hob and extractor hood.



M&B

French doors open directly onto the rear garden, helping to create a seamless connection between indoor and outdoor living while flooding the room with natural light.

Completing the ground floor is a well-appointed cloakroom fitted with a contemporary vanity unit and concealed cistern WC.

The first floor continues to impress with three well-proportioned bedrooms. The principal bedroom benefits from built-in wardrobes and enjoys the added luxury of a private en-suite shower room. Bedroom two is another generous double room, also featuring built-in wardrobes, while the third bedroom provides excellent flexibility as a child's bedroom, guest room or home office. A modern family bathroom serves the remaining accommodation and is fitted with a white suite including a bath with shower attachment, vanity storage and contemporary finishes.

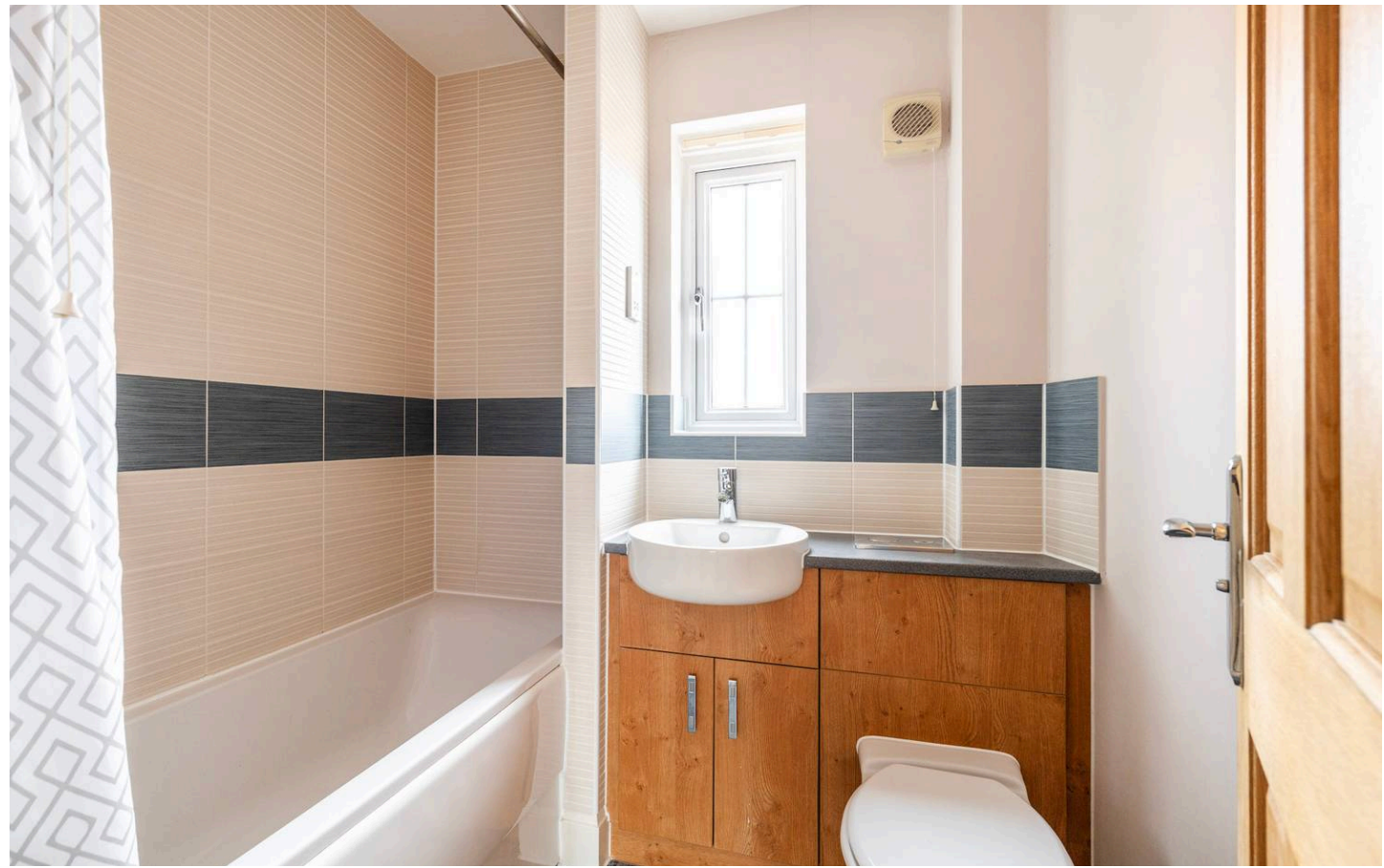
Outside, the rear garden has been designed with ease of maintenance in mind. A central lawn is framed by patio and pathway areas, creating an attractive space for relaxing, entertaining and outdoor dining. The garden is fully enclosed, making it ideal for children and pets, while a rear gate provides convenient access to the allocated parking space and single garage.

The brick-built garage benefits from power and lighting and offers valuable additional storage, secure parking or workshop potential. Combined with the allocated parking space, the property provides practical off-road parking rarely found with homes of this style.

Agents Note

This property will be sold freehold and connected to mains water, electricity and drainage. Alongside oil-fired heating.

Some images used in this listing have been digitally staged to illustrate potential furnishing and layout options. We recommend arranging a viewing to assess the space and features in person.



M&B

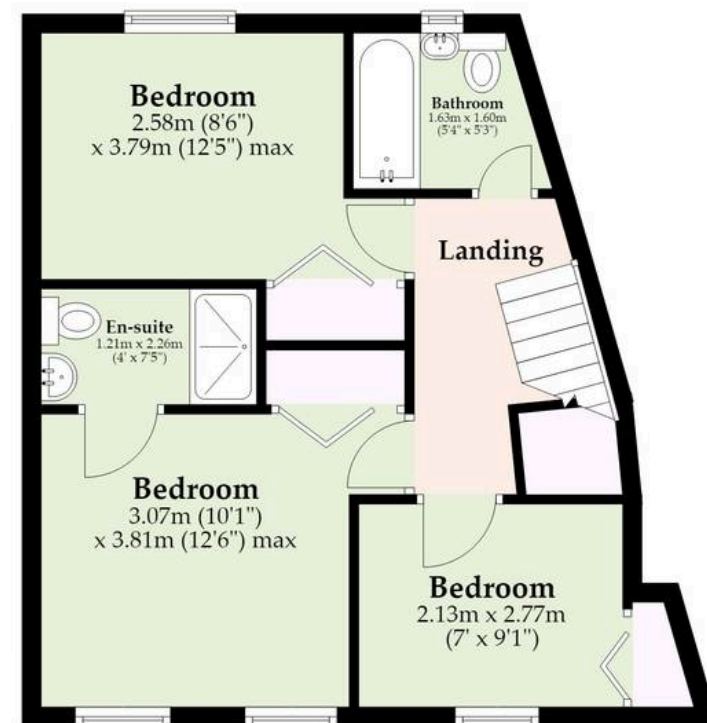
Ground Floor

Approx. 58.7 sq. metres (631.3 sq. feet)



First Floor

Approx. 41.1 sq. metres (442.4 sq. feet)



Total area: approx. 99.8 sq. metres (1073.7 sq. feet)

Whilst every attempt has been made to ensure the accuracy of the floorplan contained here, measurements of doors, windows, rooms and any other items are approximate and no responsibility is taken for any error, omission or mis-statement. This plan is for illustrative purposes only and should be used as such by any prospective purchaser. The services, systems and appliances shown have not been tested and no guarantee as to their operability or efficiency can be given.

Plan produced using PlanUp.

Dreaming of this home? Let's make it a *reality*.



Meet *Sarah*
Senior Property Consultant



Meet *Dan*
Branch Partner



Meet *Lauren*
Property Consultant

Minors & Brady
Your home, our market

 caister@minorsandbrady.co.uk

 01493 806188

 48 High Street, Caister-on-Sea, Great Yarmouth, NR30 5EH

BURY ST. EDMUNDS | CAISTER-ON-SEA | DEREHAM | DISS | NORWICH | OULTON BROAD | WROXHAM



How can we support

- ✓ Residential Mortgages
- ✓ Protection & Insurance
- ✓ Buy-to-let (personal and limited company)



Matt Waters
Director and
Principal



Victoria Payne
Mortgage and
Protection Advisor

Offering you quick and professional mortgage advice every step of the way.

T: 01603 210378
E: enquiries@norfolk-mortgages.co.uk