



16 Masefield Mews, Dereham

Dereham



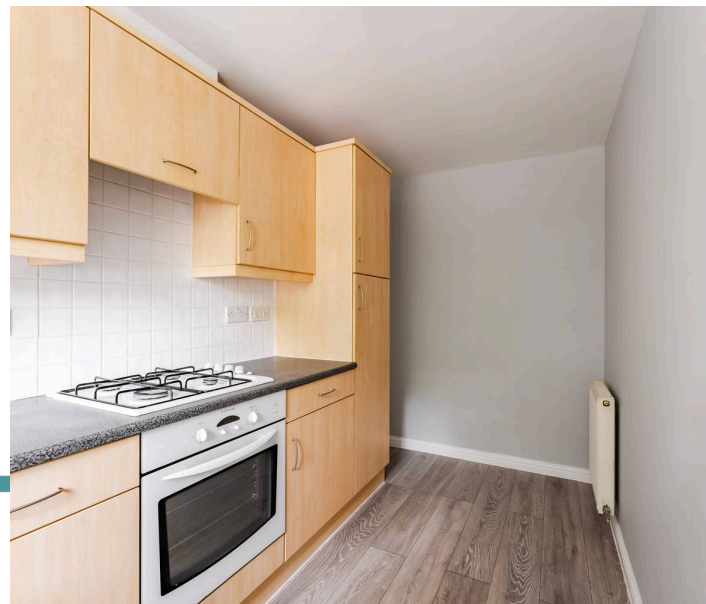
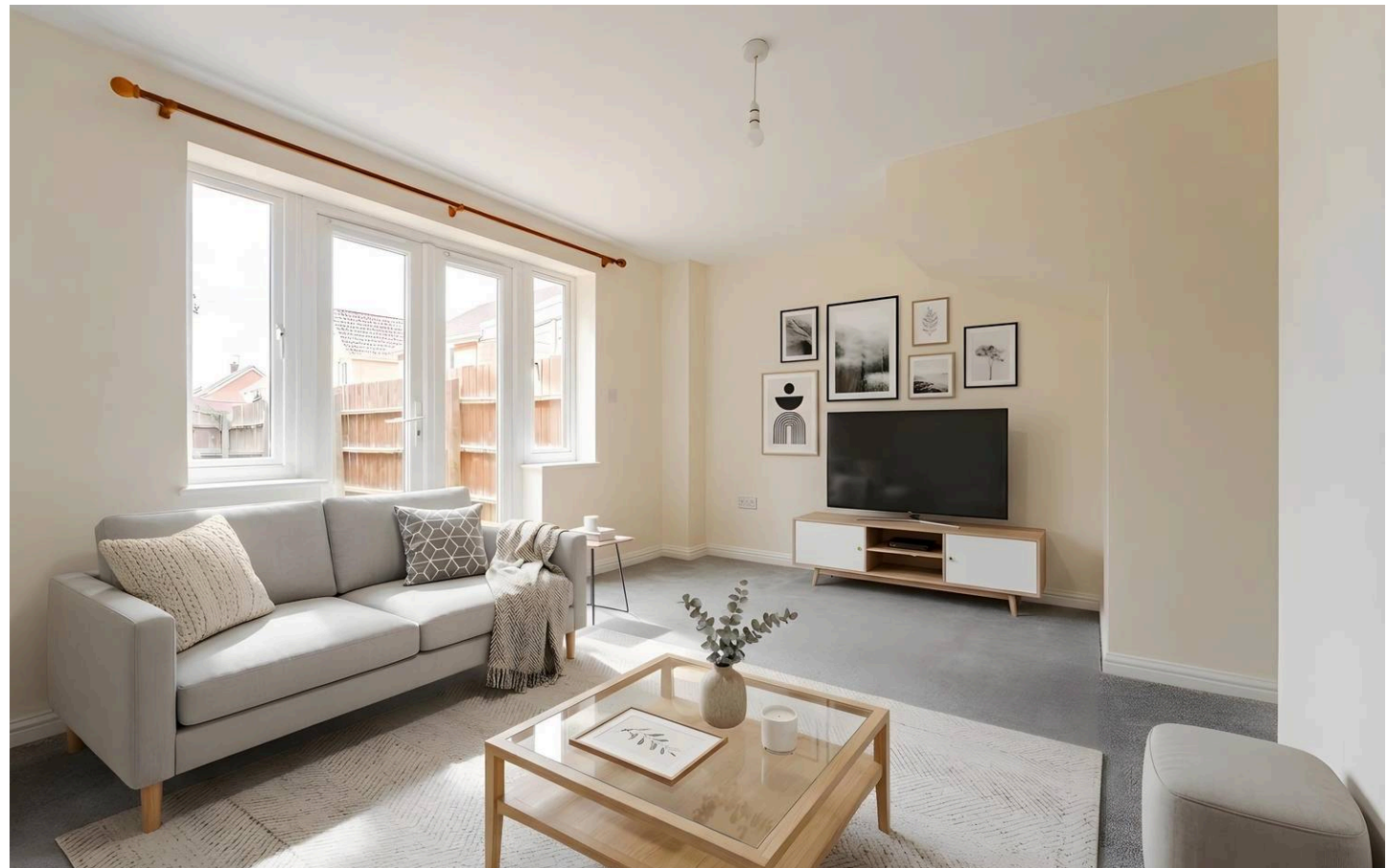
Minors & Brady

16 Masefield Mews

Dereham

A fantastic opportunity to acquire a well-presented two-bedroom end-terrace home in a peaceful residential setting. Offering bright and well-proportioned accommodation throughout, the property is ideally suited to first-time buyers, investors, couples and downsizers alike. The spacious lounge enjoys direct access to the enclosed rear garden, while the fitted kitchen provides practical space for everyday living. Upstairs, two generous double bedrooms are complemented by a family bathroom with a shower over the bath. Further benefits include a ground floor cloakroom, gas central heating and space for off-road parking. Conveniently located close to Dereham's excellent range of amenities, schools and transport links, this home combines comfort, convenience and great lifestyle appeal.

- Well-presented two-bedroom end-terrace home
- Spacious and naturally bright lounge
- Fitted kitchen with ample storage units
- Convenient ground floor cloakroom/WC
- Two generous double bedrooms
- Family bathroom with shower over bath
- Gas central heating throughout
- Private and enclosed rear garden
- Space for off-road parking
- Quiet residential location close to amenities and schools



M&B



M&B

16 Masefield Mews

Dereham

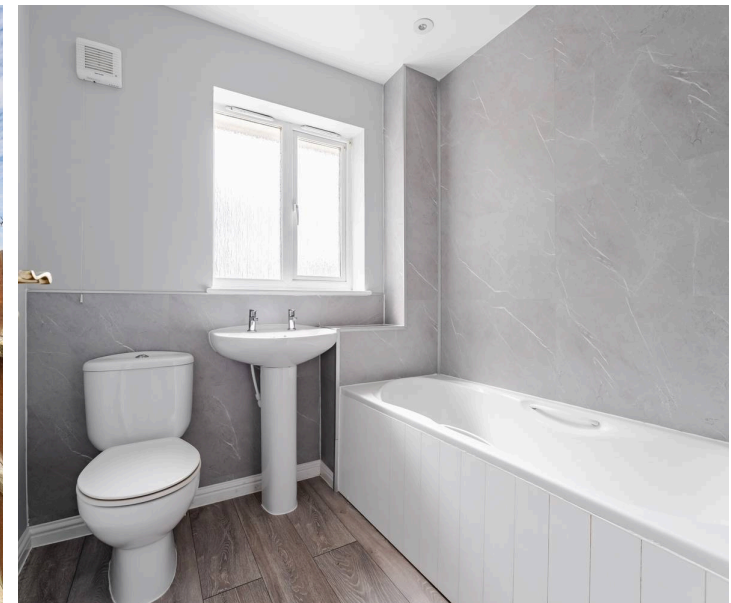
Masefield Mews, Dereham

This well-presented two-bedroom end-terrace home offers comfortable and practical accommodation, making it an excellent choice for first-time buyers, investors, couples or those looking to downsize. Occupying a pleasant position within a quiet residential development, the property combines well-proportioned living space with a private rear garden and the convenience of nearby amenities.

The accommodation begins with an entrance porch, providing a useful welcome to the home and incorporating a convenient ground floor cloakroom. From here, the property opens into a spacious lounge which serves as the main living area. Filled with natural light and enjoying direct access to the rear garden through patio doors, this inviting space is ideal for both relaxing and entertaining.

The kitchen is fitted with a range of wall and base units, offering ample storage and preparation space. Equipped with a gas hob and electric oven, it provides a practical layout for everyday cooking while remaining well connected to the rest of the home.

Upstairs, the property offers two generous double bedrooms. The principal bedroom benefits from a fitted wardrobe, providing useful built-in storage, while the second bedroom offers flexibility for guests, home working or additional living space as required.



16 Masefield Mews

Dereham

A three-piece family bathroom completes the first-floor accommodation and features a bath with shower over, providing both practicality and convenience.

Outside, the enclosed rear garden is predominantly laid to lawn, creating a low-maintenance outdoor space that can be enjoyed throughout the year. Whether used for relaxing, gardening or outdoor dining, it provides a pleasant extension of the living accommodation.

Further benefits include gas central heating, double glazing, EPC rating D and space for off-road parking. Conveniently located close to Dereham's excellent range of shops, schools, leisure facilities and transport links, this attractive home provides an ideal blend of comfort, convenience and value.

Agents Note

This property will be sold freehold.

Connected to mains water, electricity, gas and drainage.

Some images used in this listing have been digitally staged to illustrate potential furnishing and layout options. We recommend arranging a viewing to assess the space and features in person.



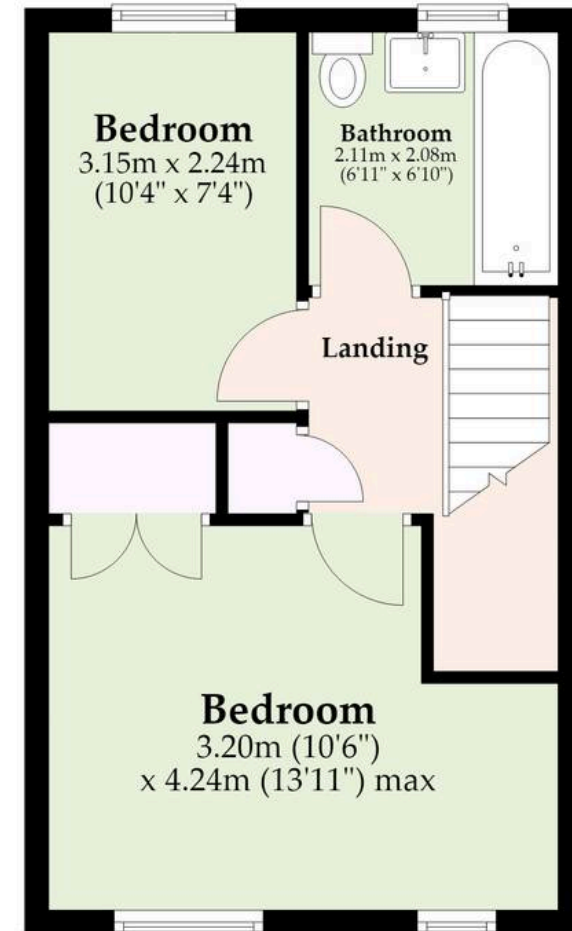
Ground Floor

Approx. 41.0 sq. metres (441.1 sq. feet)



First Floor

Approx. 31.5 sq. metres (339.4 sq. feet)



Total area: approx. 72.5 sq. metres (780.5 sq. feet)

M&B

Whilst every attempt has been made to ensure the accuracy of the floorplan contained here, measurements of doors, windows, rooms and any other items are approximate and no responsibility is taken for any error, omission or mis-statement. This plan is for illustrative purposes only and should be used as such by any prospective purchaser. The services, systems and appliances shown have not been tested and no guarantee as to their operability or efficiency can be given.

Plan produced using PlanUp.

Dreaming of this home? Let's make it a *reality*.



Meet *Kyle*
Branch Manager



Meet *Aysegul*
Aftersales Progressor



Meet *Curtis*
Listings Director

Minors & Brady
Your home, our market



dereham@minorsandbrady.co.uk



01362 700820



9a Market Place, Dereham, NR19 2AW

BURY ST. EDMUNDS | CAISTER-ON-SEA | DEREHAM | DISS | NORWICH | OULTON BROAD | WROXHAM



How can we support

- ✓ Residential Mortgages
- ✓ Protection & Insurance
- ✓ Buy-to-let (personal and limited company)



Matt Waters
Director and
Principal



Victoria Payne
Mortgage and
Protection Advisor

Offering you quick and professional mortgage advice every step of the way.

T: 01603 210378
E: enquiries@norfolk-mortgages.co.uk