



13 Gallus Close, Northrepps

Cromer



Minors & Brady

13 Gallus Close

Northrepps, Cromer

A deceptively spacious village home where generous proportions, quality finishes and picturesque surroundings come together beautifully. Positioned opposite the village green in a peaceful setting, this impressive four-bedroom detached property enjoys a private, non-overlooked rear garden with attractive field views beyond. The heart of the home is a stunning open-plan kitchen, dining and family space with integrated appliances, while a dual-aspect sitting room with bi-fold doors provides exceptional entertaining space. Four genuine double bedrooms, including two with en-suite facilities and three with built-in storage, ensure comfortable accommodation for families and guests alike. Thoughtful details such as oak internal doors, bespoke shutters, air conditioning and a galleried landing further enhance the home's appeal. Complete with a double cart lodge, additional parking and a sought-after North Norfolk village location, this is a home perfectly suited to modern family living.

- Deceptively spacious four-bedroom detached village home
- Peaceful position overlooking the village green
- Stunning open-plan kitchen, dining and family space
- Dual-aspect sitting room with bi-fold doors to the garden
- Four generous double bedrooms, three with fitted storage
- Two en-suite shower rooms plus a spacious family bathroom
- Bespoke shutters, oak internal doors and galleried landing
- Private non-overlooked garden with field views beyond
- Double cart lodge, additional parking space and air conditioning installed





M&B

13 Gallus Close

Northrepps, Cromer

The Location

Set within the well-regarded village of Northrepps, this home enjoys a setting that strikes a wonderful balance between rural tranquillity and everyday convenience. At its heart are familiar and well-loved amenities, including a popular local pub, a village hall that hosts regular events and gatherings, and a historic church that reflects the area's long-standing heritage.

Surrounded by gently rolling countryside, Northrepps offers easy access to a variety of scenic walking routes, whether meandering through open fields, along quiet lanes, or toward the wider North Norfolk landscape. It's an ideal setting for those who enjoy outdoor life, dog walking, or simply taking time to slow down and appreciate nature.

Just a short distance away lies the vibrant seaside town of Cromer, bringing the coast firmly within reach. Here, residents can enjoy sandy beaches, clifftop walks, a traditional pier, and a wide choice of independent shops, cafés and restaurants. Cromer also provides practical amenities including well-regarded schools, healthcare facilities, and a railway station with links to Norwich and beyond, making commuting or day trips straightforward.

This combination of village charm, countryside surroundings and nearby coastal living makes Northrepps an especially appealing place to call home. It offers a lifestyle that feels relaxed and welcoming, yet remains well connected, perfectly suited to families, couples or anyone seeking a calmer pace of life.



M&B

13 Gallus Close

Northrepps, Cromer

Gallus Close, Northrepps

Occupying a peaceful position opposite the village green in the highly sought-after village of Northrepps, this deceptively spacious four-bedroom detached home offers an exceptional blend of modern comfort, generous proportions and picturesque surroundings.

Beautifully presented throughout, the property enjoys an enviable setting with elevated field views to the rear, creating a wonderful sense of privacy and space that is rarely found. Thoughtfully designed for modern family living, the accommodation extends across two floors and is complemented by ample parking, a double cart lodge and beautifully maintained gardens.

The property immediately impresses with its spacious entrance hall, creating a welcoming first impression and setting the tone for the accommodation beyond. Quality oak internal doors feature throughout, while bespoke shutters add both style and practicality, enhancing the home's elegant finish.

At the heart of the property is a stunning open-plan kitchen and family area, designed to bring people together. Fitted with a range of integrated appliances, generous storage and a breakfast bar, the kitchen offers both functionality and style in equal measure. The open-plan layout flows seamlessly into a spacious seating area, creating a sociable environment ideal for everyday family life and entertaining alike. French doors open directly onto the rear garden, allowing natural light to flood the space whilst providing an effortless connection to the outdoors. The room is further enhanced by an air conditioning unit, ensuring year-round comfort.



13 Gallus Close

Northrepps, Cromer

Complementing the open-plan kitchen is a practical utility room, offering additional storage and space for household appliances, helping to keep the main living areas organised and clutter-free. A conveniently positioned ground-floor WC further enhances the practicality of the home.

The impressive sitting and dining room provides a substantial reception space perfectly suited to both relaxation and entertaining. Enjoying a dual-aspect design, the room is wonderfully bright throughout the day and benefits from air conditioning for additional comfort. Bi-fold doors open onto the garden, creating a seamless transition between inside and out during the warmer months.

A striking galleried landing serves the first-floor accommodation, enhancing the feeling of space and light throughout the upper level. All four bedrooms are generous doubles, providing excellent flexibility for families and guests alike. Three of the bedrooms benefit from built-in storage, ensuring practical and well-organised living.

The principal bedroom enjoys the luxury of an en-suite shower room, while a second bedroom also benefits from its own en-suite facilities, making it ideal for guests or older family members seeking additional privacy. The remaining bedrooms are served by a spacious family bathroom, creating a well-balanced arrangement for modern family life.



13 Gallus Close

Northrepps, Cromer

Outside, the rear garden is a particular highlight. Thoughtfully maintained and enjoying a high degree of privacy, it boasts an attractive non-overlooked aspect with field views beyond the raised bank at the rear. Whether relaxing, entertaining or simply enjoying the peaceful surroundings, the garden provides a wonderful extension of the living accommodation.

To the rear of the property, a double cart lodge provides covered parking for two vehicles, while a further allocated parking space ensures practical off-road parking for a total of three vehicles. Combined with its quiet village position, attractive outlook and generous accommodation, this exceptional home offers an outstanding opportunity to enjoy village living without compromising on modern conveniences.

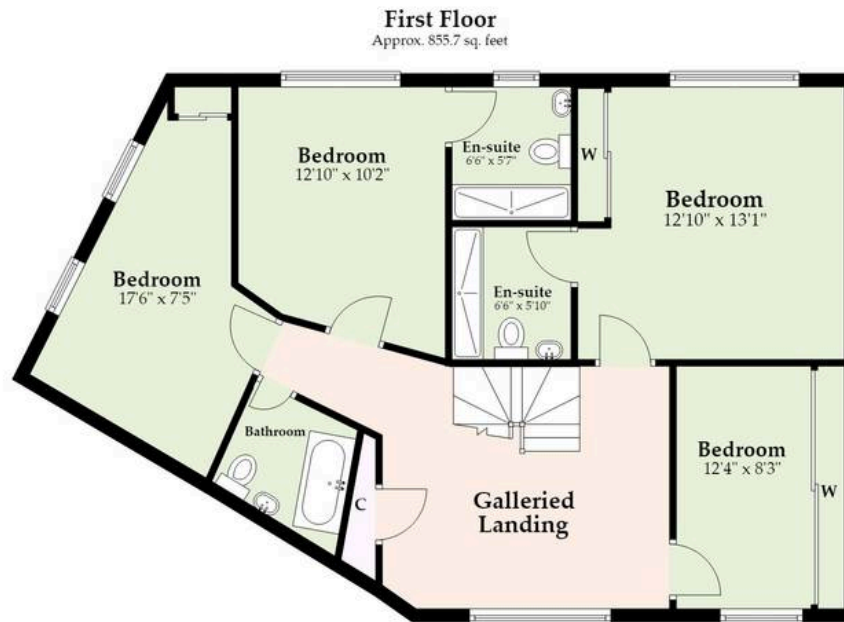
Agents Note

This property will be sold freehold.

Service charge: £140 per annum/approx.



M&B



Total area: approx. 1758.8 sq. feet

Whilst every attempt has been made to ensure the accuracy of the floorplan contained here, measurements of doors, windows, rooms and any other items are approximate and no responsibility is taken for any error, omission or mis-statement. This plan is for illustrative purposes only and should be used as such by any prospective purchaser. The services, systems and appliances shown have not been tested and no guarantee as to their operability or efficiency can be given.

Plan produced using PlanUp.

Dreaming of this home? Let's make it a *reality*.



Meet *Abi*
Branch Partner



Meet *Karol*
Property Lister



Meet *Claire*
Aftersales Team Leader

Minors & Brady
Your home, our market



wroxham@minorsandbrady.co.uk



01603 783088



6 Church Road, Wroxham, Norwich, NR12 8UG

BURY ST. EDMUNDS | CAISTER-ON-SEA | DEREHAM | DISS | NORWICH | OULTON BROAD | WROXHAM



How can we support

- ✓ Residential Mortgages
- ✓ Protection & Insurance
- ✓ Buy-to-let (personal and limited company)



Matt Waters
Director and
Principal



Victoria Payne
Mortgage and
Protection Advisor

Offering you quick and professional mortgage advice every step of the way.

T: 01603 210378
E: enquiries@norfolk-mortgages.co.uk