



180 Jex Road, Norwich

In Excess of £200,000

Minors & Brady

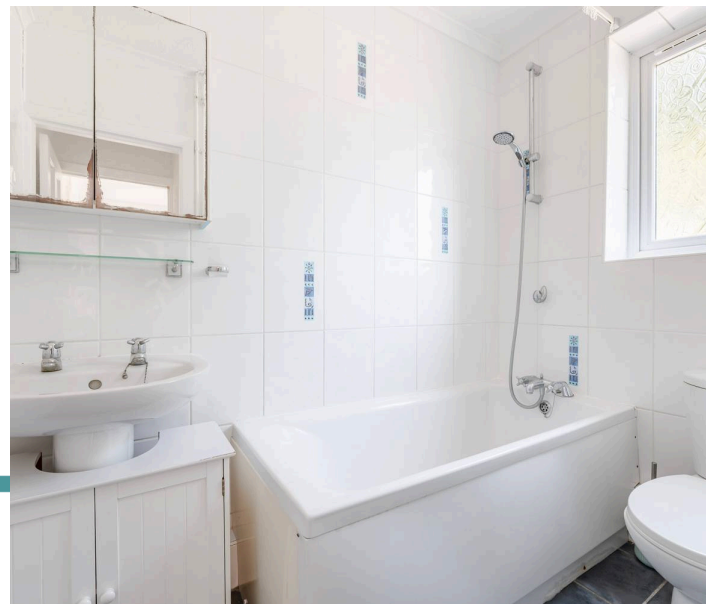


180 Jex Road

Norwich

Packed with potential and offering three bedrooms off the landing, this attractive end-of-terrace home is an excellent opportunity for first-time buyers, families and investors alike. Well positioned close to local amenities, schools and transport links, the property provides comfortable and practical accommodation throughout. The bright lounge creates a welcoming living space, complemented by a fitted kitchen and ground-floor bathroom. Upstairs, three bedrooms offer flexibility for family life, home working or guest accommodation. Outside, the enclosed rear garden provides a private space to relax and enjoy the warmer months. Combining convenience, versatility and excellent value, this is a home with broad appeal.

- End-of-terrace home in a convenient residential location
- Three bedrooms arranged off the first-floor landing
- Bright and comfortable lounge with feature fireplace
- Fitted kitchen with integrated cooking appliances
- Useful understairs storage for everyday practicality
- Ground-floor family bathroom
- Flexible accommodation suited to families or first-time buyers
- Private and enclosed rear garden
- Close to local shops, schools and transport links
- Excellent opportunity for homeowners and investors alike



M&B





180 Jex Road

Norwich

Jex Road, Norwich

Situated in a convenient residential location close to local amenities, schools and transport links, this attractive end-of-terrace home offers well-balanced accommodation ideally suited to first-time buyers, young families and investors alike. Combining practical living space with a private garden and three bedrooms, the property presents an excellent opportunity to secure a home in a well-connected part of the city.

Upon entering, a welcoming hallway leads through to the principal reception room. The lounge is a bright and comfortable space, enjoying natural light from the front aspect and providing ample room for both everyday living and entertaining. Characterful flooring and an attractive fireplace create a warm and inviting atmosphere, making the room an ideal place to relax at the end of the day.

To the rear of the property, the kitchen is fitted with a range of wall and base units, offering good levels of storage and preparation space. Integrated cooking appliances are complemented by room for additional freestanding appliances, ensuring the space remains practical for modern living. Useful understairs storage further enhances functionality, while a door provides direct access to the garden.

Completing the ground floor is the family bathroom, fitted with a bath, wash basin and WC, creating a convenient layout for everyday use.



M&B



180 Jex Road

Norwich

The first floor offers three bedrooms arranged off the landing. The principal bedroom is particularly spacious and benefits from windows to two aspects, creating a bright and airy feel. The remaining bedrooms provide flexible accommodation for family members, guests or those requiring a home office, nursery or hobby room.

Outside, the property benefits from a private enclosed rear garden, providing a pleasant outdoor space to enjoy throughout the year. Whether used for entertaining, gardening or simply relaxing, the garden offers excellent potential to create a personalised outdoor space.

Agent's Note

This property will be sold freehold and connected to mains water, electricity, gas and drainage.

Some images used within this listing have been digitally staged with furniture and décor for illustrative purposes. These images are intended to demonstrate the potential use and layout of the rooms. Prospective purchasers are encouraged to arrange a viewing to fully appreciate the property's size, layout and condition.



M&B

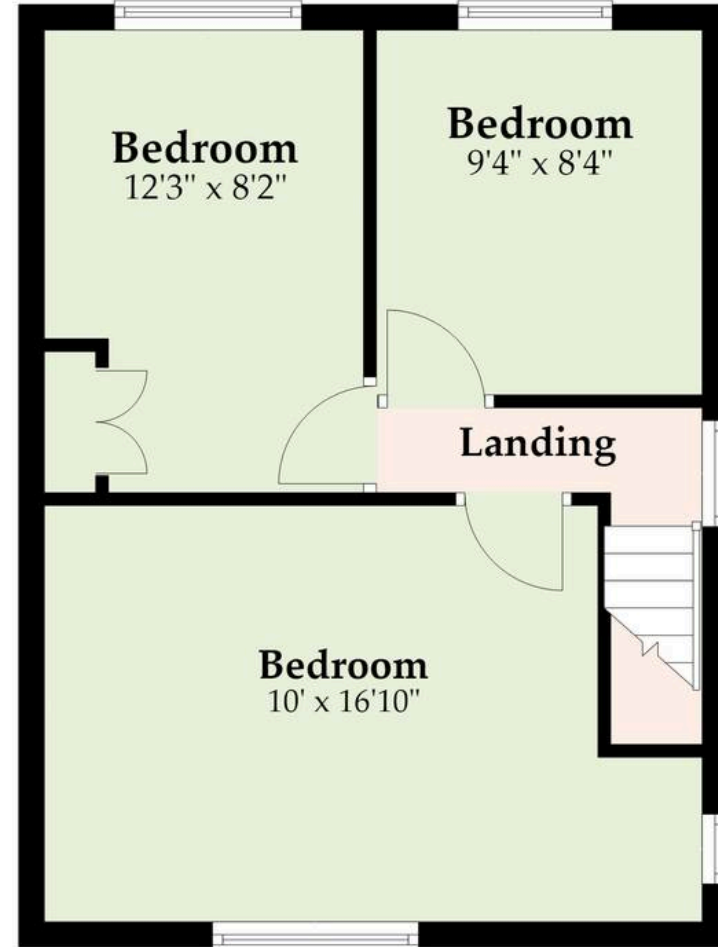
Ground Floor

Approx. 394.4 sq. feet



First Floor

Approx. 430.4 sq. feet



Total area: approx. 824.8 sq. feet

Whilst every attempt has been made to ensure the accuracy of the floorplan contained here, measurements of doors, windows, rooms and any other items are approximate and no responsibility is taken for any error, omission or mis-statement. This plan is for illustrative purposes only and should be used as such by any prospective purchaser. The services, systems and appliances shown have not been tested and no guarantee as to their operability or efficiency can be given.

Plan produced using PlanUp.

Dreaming of this home? Let's make it a *reality*.



Meet *Liam*
Branch Manager



Meet *Nagilla*
Aftersales Team Leader



Meet *Tristan*
Senior Property Lister

Minors & Brady
Your home, our market

 norwich@minorsandbrady.co.uk

 01603 365085

 107 Unthank Road, Norwich, NR2 2PE

BURY ST. EDMUNDS | CAISTER-ON-SEA | DEREHAM | DISS | NORWICH | OULTON BROAD | WROXHAM



How can we support

- ✓ Residential Mortgages
- ✓ Protection & Insurance
- ✓ Buy-to-let (personal and limited company)



Matt Waters
Director and
Principal



Victoria Payne
Mortgage and
Protection Advisor

Offering you quick and professional mortgage advice every step of the way.

T: 01603 210378
E: enquiries@norfolk-mortgages.co.uk